

# Keston

BY IDEAL HEATING

## TWIN FLUE TECHNOLOGY EXPERTS

DESIGNED TO GO THE DISTANCE



# EVERYTHING IS POSSIBLE



Providing ultimate reliability  
with upto 7 year warranties



Providing the perfect solution  
for difficult installations



British built since 2013 in our  
Yorkshire factory

## DESIGNED TO WORK WITHOUT COMPROMISE

When you choose to work with Keston you can be confident that you're partnering with a British manufacturer that's supported by a dedicated national service team, delivering help and advice to you and your customers, 364 days a year.

Our rigorous research & development procedures and manufacturing quality control checks ensures that all of our products are produced to the highest of standards, delivering total comfort and peace of mind.

The Keston Twin Flue system makes every job easier. To give you maximum flue flexibility, you can run the flue vertically or horizontally from an elevation of 1.5° and the flue can be extended up to 27 metres from the boiler allowing for easy and hassle-free installation.

## THE ULTIMATE SIMPLE FLUE SYSTEM

- Flexible flue positioning avoids plumbing
- Widely available from plumbing and builders merchants
- Flue can be painted when installed internally and externally
- 50mm muPVC (PVC-C)\* solvent weld allowing simple cost effective installation



## CONTENTS

- 02 - Designed to work without compromise
- 04 - A Keston for all occasions
- 06 - Connect
- 08 - We believe in rewarding our installers
- 10 - Twin flue systems
- 16 - Cascade installations
- 18 - Keston Heat 2 45 & 55
- 23 - Multi Boiler installations
- 24 - Frame and header kits
- 25 - Keston Heat 2 - frame & header accessories
- 32 - Keston System 30
- 38 - Keston Combi C30 & C35
- 45 - Keston Service, support & aftersales
- 46 - Keston training
- 48 - Product information

\* The only systems approved for this application are: Marley muPVC (PVC-C) Solvent Weld Waste System (50mm), Polypipe System 2000 muPVC (PVC-C) Solvent Weld Waste System (50mm), Polypipe Terrain Solvent Weld System (50mm) and Wavin Osmo PVC-C Solvent Weld System (50mm). Please use the recommended Solvent Weld Cement for each system. Please see page 9 for more details. † Keston System and Combi: 5 year parts & labour warranty as standard. 7 year warranty when installed with a Keston 22mm System Filter and registered within 30 days of installation. Terms and conditions apply. Keston Heat 2: 2 year parts & labour warranty as standard. 5 year warranty available subject to being commissioned by Keston Boilers. Free Commissioning only available when a Keston 28mm System Filter is installed with a single Keston Heat 2 boiler; not available on multiple (cascade) boiler installations. Terms and conditions apply.



The Keston range includes both domestic and light commercial models which come complete with twin flue capability.

# A KESTON FOR ALL OCCASIONS



Keston boilers are offered with a warranty of up to 7 years†, ensuring the ultimate peace of mind for both you and your customer. The Keston range is made up of Combi, Heat only and System boilers, offering a solution for all applications.

Every model in the range offers a market leading solution for awkward and problematic installations, thanks to the twin flue capability.

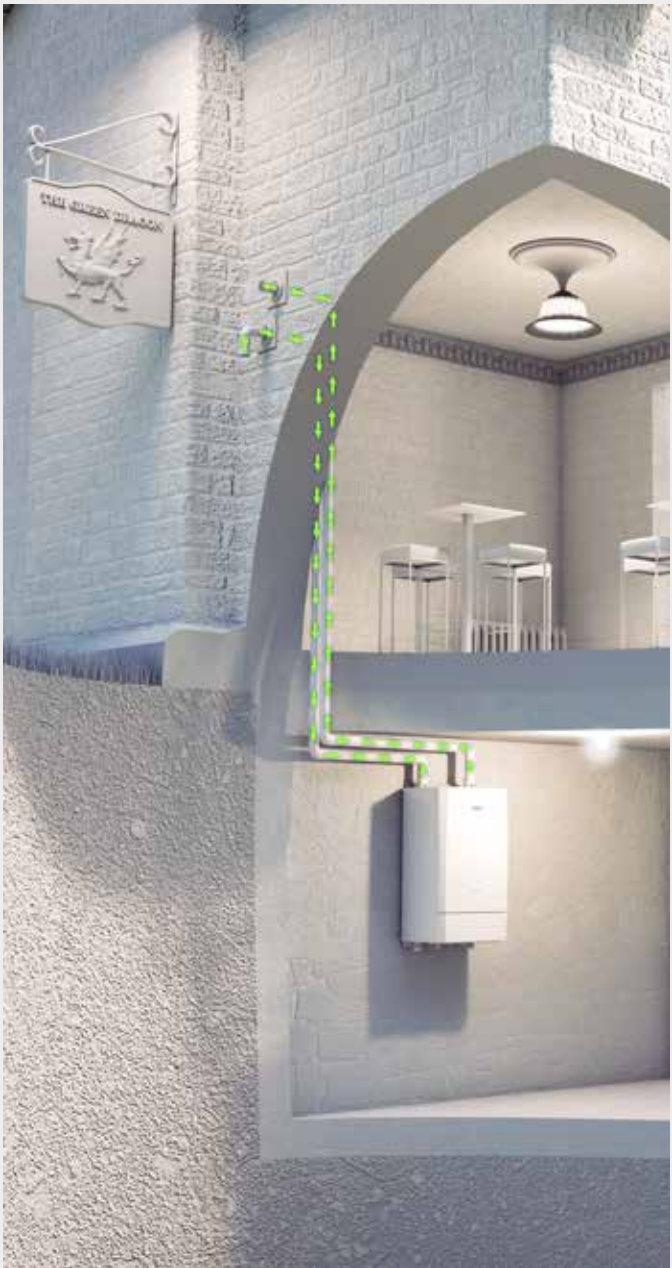
You can rest assured when choosing Keston as you will be supported by a national customer service team, offering support 7 days a week.



Keston boilers are available with warranties of up to 7 years when a Keston System Filter is also installed†

With Keston, your boiler can be situated any room, any place, anywhere – no compromise.

WHERE I DON'T WANT  
THE BOILER IN SIGHT



WHERE THERE IS A LONG DISTANCE  
FROM BOILER TO OUTLET



Images for illustrative purposes only. † Keston System and Combi: 5 year parts & labour warranty as standard. 7 year warranty when installed with a Keston 22mm System Filter and registered within 30 days of installation. Terms and conditions apply. Keston Heat 2: 2 year parts & labour warranty as standard. 5 year warranty available subject to being commissioned by Keston Boilers. Free Commissioning only available when a Keston 28mm System Filter is installed with a single Keston 2 Heat boiler; not available on multiple (cascade) boiler installations. Terms and conditions apply.

Earn points for your registrations with the Connect loyalty scheme.\*



# CONNECT

The more installs you register, the more loyalty points you earn each time



Free Gas Safe Registrations



Exclusive Promotions

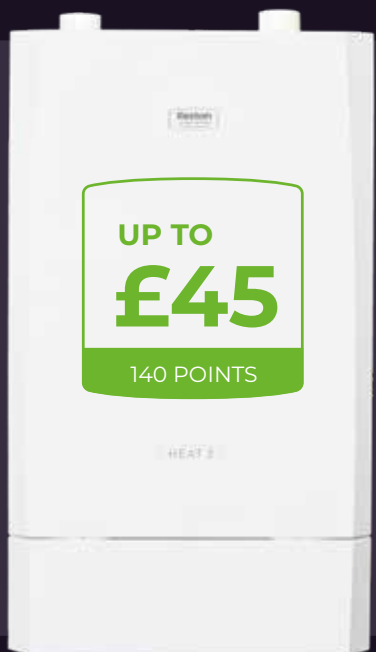
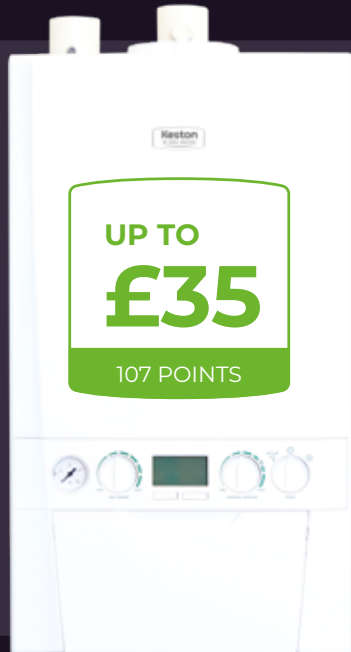


Free Training



Earn Rewards Points

## HOW TO EARN CONNECT POINTS



### WORKING WITH CONNECT

When you register with Connect you will get a wide range of benefits straight away. Registrations of both Ideal Heating and Keston boilers count towards your total number of boilers, moving you up the ranks quicker.

**BRONZE**  
New accounts are Bronze rated which gives you rewards of up to £15 for a Keston Combi or System and up to £30 for a Keston Heat 2 registration.

**SILVER**  
You will move up to Silver rated after your twentieth boiler where you can earn over £30 for registering a Keston Heat 2.

**GOLD**  
If you register 50 boilers in any twelve month time period you will receive rewards of up to £45 per boiler.



I've used my Connect points for all sorts, I got my van wrapped and bought my little boy's birthday presents. Its so flexible it's a great scheme.



Who wouldn't want to be part of this scheme! Fantastic support whenever I need it, plus I get rewarded for my work!

	BRONZE 0-19 BOILERS	SILVER 20-49 BOILERS	GOLD 50+ BOILERS
COMBI & SYSTEM	£15.00 46 POINTS	£25.00 80 POINTS	£35.00 107 POINTS
HEAT 2	£30.00 100 POINTS	£30.00 100 POINTS	£45.00 140 POINTS

Join today at [www.installerconnect.com](http://www.installerconnect.com)



Earn points on every boiler you register with Connect\*. The points soon add up and can then be used to claim a huge variety of rewards available. From workwear to family holidays, Christmas presents to radio adverts there's a reward for everyone.

# WE BELIEVE IN REWARDING OUR INSTALLERS



### EASY WARRANTY REGISTRATIONS

Register your customers' warranty through our website or new Connect app. The Connect app available for iOS and Android allows you to register boilers on the go by simply scanning the boiler barcode and filling in the information.



### FREE GAS SAFE REGISTRATIONS

Our web portal allows you to register boilers and simultaneously notify Gas Safe where we will pick up the charge!

You can then access warranty and Gas Safe certificates as PDFs whenever you need them.



High street vouchers



Gadgets & gifts



Premier Club



Axinite workwear

We've partnered with new workwear brand Axinite to give you access to a great range of premium workwear.

Download vouchers from the installer connect portal and use them against new work trousers, boots and personalised t-shirts and jackets.



Holidays and city breaks

Whether it's seeing the sights in Paris or relaxing on the beaches of the Algarve. Why not spend your hard earned Connect points on a memorable getaway?



The benefits of the unique Keston flue systems make every installation easier. With Keston everything is possible

# TWIN FLUE SYSTEMS

A low cost, small diameter (50mm) muPVC (PVC-C) pipe (Marley, Polypipe 2000 System, Polypipe Terrain 200 and Wavin Osmo systems only) is the only item required for use with the innovative Keston flue and air intake system. This is readily available from your local merchant at a fraction of the cost of concentric flue.

The Keston flue system makes every job easier. To give you maximum flexibility, you can run the flue vertically or horizontally from an elevation of 1.5°) and the flue can be extended up to 27\* metres from the boiler allowing for easy and hassle-free installation.



**Keston System**  
27m maximum flue length\*



**Keston Combi**  
27m maximum flue length\*



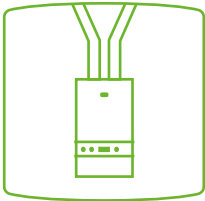
**Keston Heat 2**  
18m maximum flue length\*



### APPROVED FLUE PIPE SYSTEMS

**When installing a replacement boiler a new flue system is recommended. However re-using the existing boiler flue installation is acceptable if the installer checks and confirms:**

- The flue pipe is the approved Marley/Polypipe/Terrain/Wavin 50mm muPVC (PVC-C) solvent weld flue system
- The flue installation is upgraded to the most recent flue standards taking particular care to comply with flues in voids regulation
- A risk assessment is conducted to confirm the effectiveness of the flue
- The existing flue will last the lifetime of the new appliance



### DESIGN

Individual air supply and flue outlet pipes are used as standard.

The material approved for this application which **MUST** be used are:

- Marley muPVC Solvent Weld System (50mm)
- Polypipe System 2000 muPVC solvent weld (50mm)
- Polypipe Terrain 200 muPVC Solvent Weld System (50mm)
- Wavin OSMA PVC-C Solvent Weld System (50mm) to BS5255 and/or BSEN1566-11 and BSEN1329, are the only systems approved for this application.

### THE FOLLOWING PIPE AND FITTINGS ARE APPROVED:

#### Marley muPVC Solvent Weld System (50mm)

Marley Code	
KP 304	50mm x 4m double spigot pipe
KP32	50mm x 45 deg bend
KSC3	50mm straight coupling
KB3	50mm x 88.5 deg bend
KT3	50mm swept tee

#### Polypipe System 2000 muPVC Solvent Weld System (50mm)

Polypipe Code	
MU 301	4m length muPVC wastepipe 5/225
MU 313	50mm x 45 deg muPVC obtuse bend
MU 314	50mm x 92.5 deg muPVC swept bend
MU 310	50mm muPVC straight coupling
MU 316	50mm muPVC straight coupling
MU 316	50mm x 92.5 deg muPVC swept tee

#### Polypipe Terrain Solvent 200 Weld System (50mm)

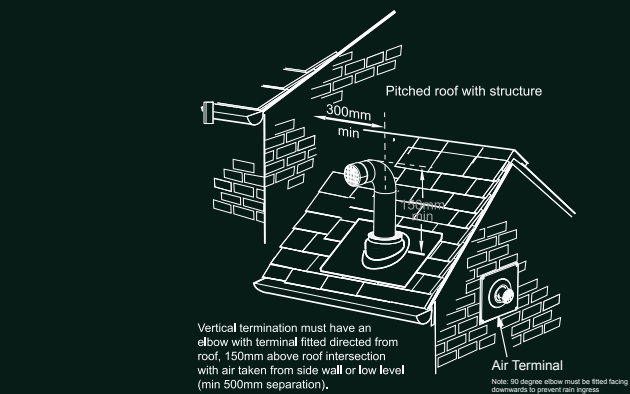
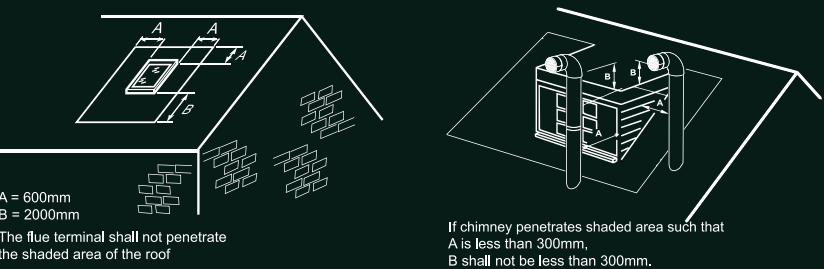
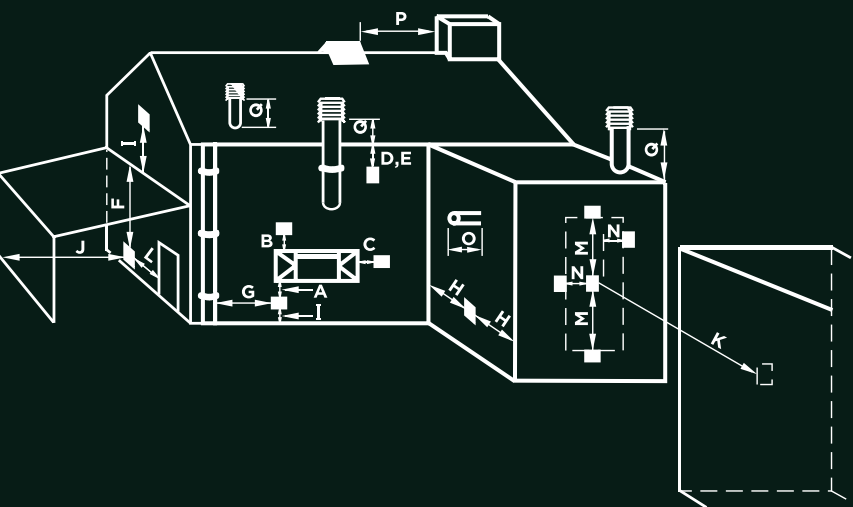
Polypipe Code	
200.2.40	4m length muPVC wastepipe
201.2.135	50mm x 135 deg muPVC bend
200.2.91	50mm x 91 1/4 deg muPVC swept bend
210.2	50mm muPVC straight coupling
204.2.135	50mm muPVC swept tee

#### Wavin OSMA PVC-C Solvent Weld System (50mm)

Wavin Code	
2M073	3M length waste pipe 50mm
2M163	50mm x 45 deg bend
2M161	50mm x 87.5 deg bend
2M104	50mm double socket
2M190	50mm x 8.75 tee



# FLUE POSITIONING

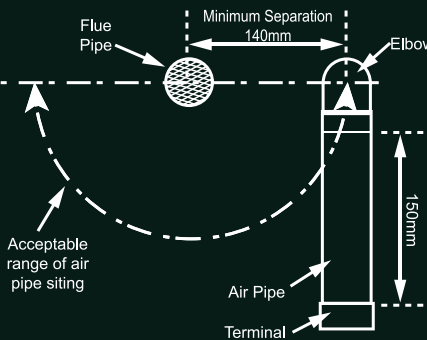


## TERMINATION OF THE FLUE AND AIR

The flue and air pipes may terminate independently through any external walls within the same dwelling except on opposing walls, within the maximum lengths shown in the graphs on pages 18, 24 and 30 (alternatively a vertical flue pipe termination is acceptable). The air pipe must have an elbow and 150mm length of pipe directed downwards with a termination grill fitted. C13 only, C53 must have a minimum of a 90 degree elbow and terminal fitted facing downwards to prevent rain ingress.

The air pipe can be situated at the side or beneath the flue pipe to a minimum dimension of 140mm (see diagram below). It must not be sited above the flue pipe. The flue and air pipes must extend by at least 40mm from the wall surface. Condensing boilers emit a visible plume of water vapour from the flue terminal, this is normal. It is the responsibility of the installer to judiciously select a terminal location that does not cause a nuisance. If either the flue or air terminal is below a height of 2m from ground level a terminal guard must be fitted.

Note. Any vertical termination MUST comply with C53 installation with the air being taken from greater than 500mm away and from a flat wall termination as diagram in “Flue Positioning”.



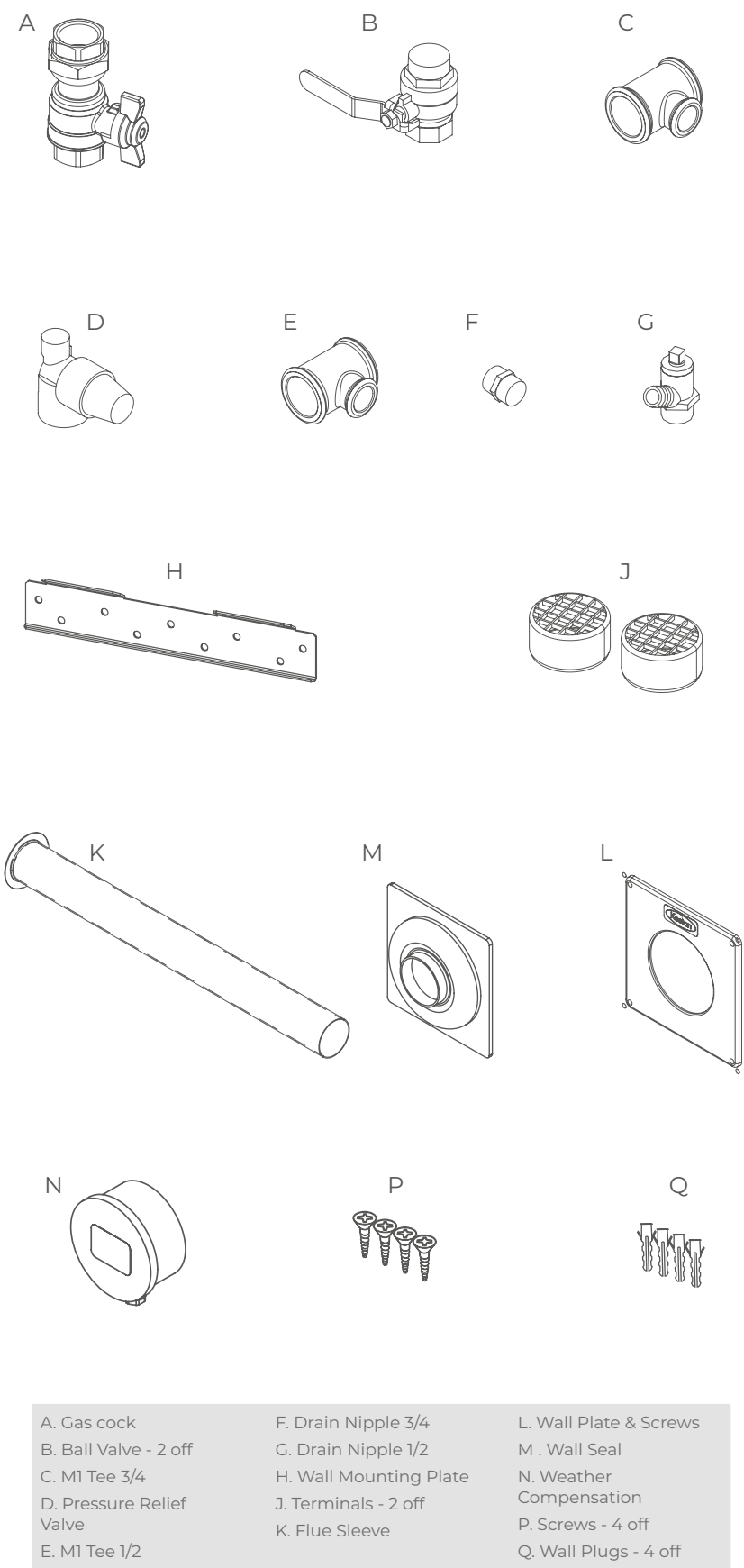
## KESTON FLUE TERMINAL POSITIONS - C13 CLASSIFICATION

Twin Flue Positions when Flue & Air Terminal are less than 500mm apart		Flue minimum spacing	Air minimum spacing
A	Below an opening (1)	300mm	50mm
B	Above an opening (1)	300mm	50mm
C	Horizontally to an opening	300mm	50mm
D	Below gutters,soil pipes or drain pipes	75mm	75mm
E	Below eaves	200mm	50mm
F	Below balcony or car port roof	200mm	50mm
G	From a vertical drain pipe or soil pipe	150mm	50mm
H	From an internal or external corner or to a boundary alongside the terminal (2)	200mm	50mm
I	Above ground,roof or balcony level	300mm	100mm
J	From a surface or boundary facing the terminal	600mm	100mm
K	From a terminal facing a terminal	1200mm	1200mm
L	From an opening in the car port into the building	1200mm	100mm
M	Vertically from a terminal on the same wall	1500mm	1500mm
N	Horizontally from a terminal on the same wall	300mm	300mm
O	From the wall on which the terminal is mounted	40mm	40mm
P	From a vertical structure on the roof	N/A	N/A
Q	Above intersection with roof	N/A	N/A
(1)	In addition, for temperature and structural reasons, the terminal should not be nearer than 150 mm (fanned draught) to an opening in the building fabric formed for the purpose of accommodating a built-in element such as a window frame		
(2)	The reference to external corners does not apply to building protrusions not exceeding 450 mm, such as disused chimneys on external walls for: fanned draught appliances		

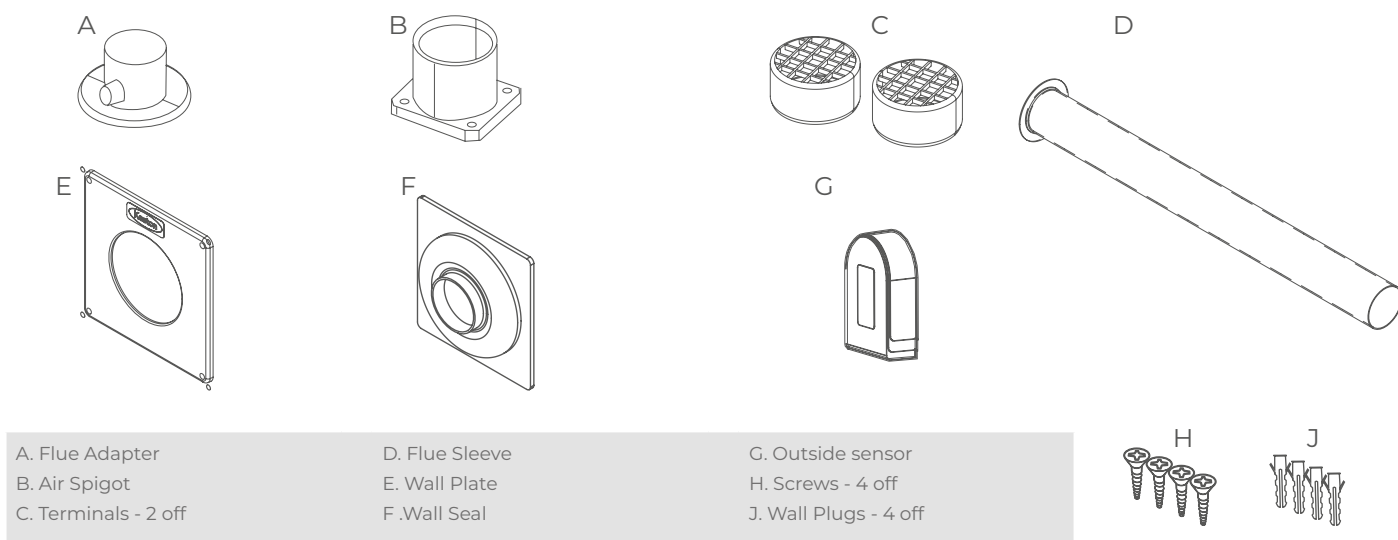
## KESTON FLUE TERMINAL POSITIONS - C53 CLASSIFICATION

Twin Flue Positions when Flue & Air Terminal are more than 500mm apart		Flue minimum spacing	Air minimum spacing
A	Below an opening (1)	300mm	50mm
B	Above an opening (1)	300mm	50mm
C	Horizontally to an opening	300mm	50mm
D	Below gutters,soil pipes or drain pipes	75mm	75mm
E	Below eaves	200mm	50mm
F	Below balcony or car port roof	200mm	50mm
G	From a vertical drain pipe or soil pipe	150mm	50mm
H	From an internal or external corner or to a boundary alongside the terminal (2)	200mm	50mm
I	Above ground,roof or balcony level	300mm	100mm
J	From a surface or boundary facing the terminal	600mm	100mm
K	From a terminal facing a terminal	1200mm	1200mm
L	From an opening in the car port into the building	1200mm	100mm
M	Vertically from a terminal on the same wall	1500mm	1500mm
N	Horizontally from a terminal on the same wall	300mm	300mm
O	From the wall on which the terminal is mounted	40mm	40mm
P	From a vertical structure on the roof	300mm	N/A
Q	Above intersection with roof	150mm	N/A
(1)	In addition, for temperature and structural reasons, the terminal should not be nearer than 150 mm (fanned draught) to an opening in the building fabric formed for the purpose of accommodating a built-in element such as a window frame		
(2)	The reference to external corners does not apply to building protrusions not exceeding 450 mm, such as disused chimneys on external walls for: fanned draught appliances		

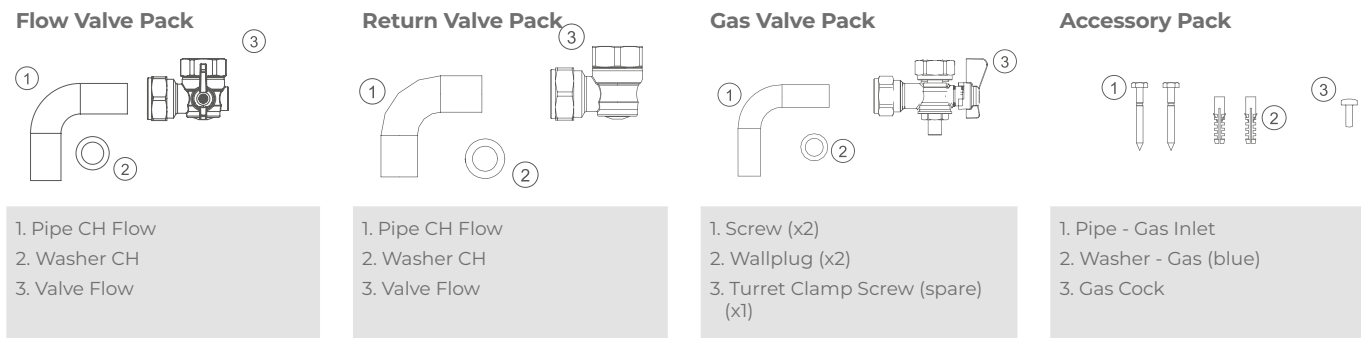
SUPPLIED WITH KESTON HEAT 2



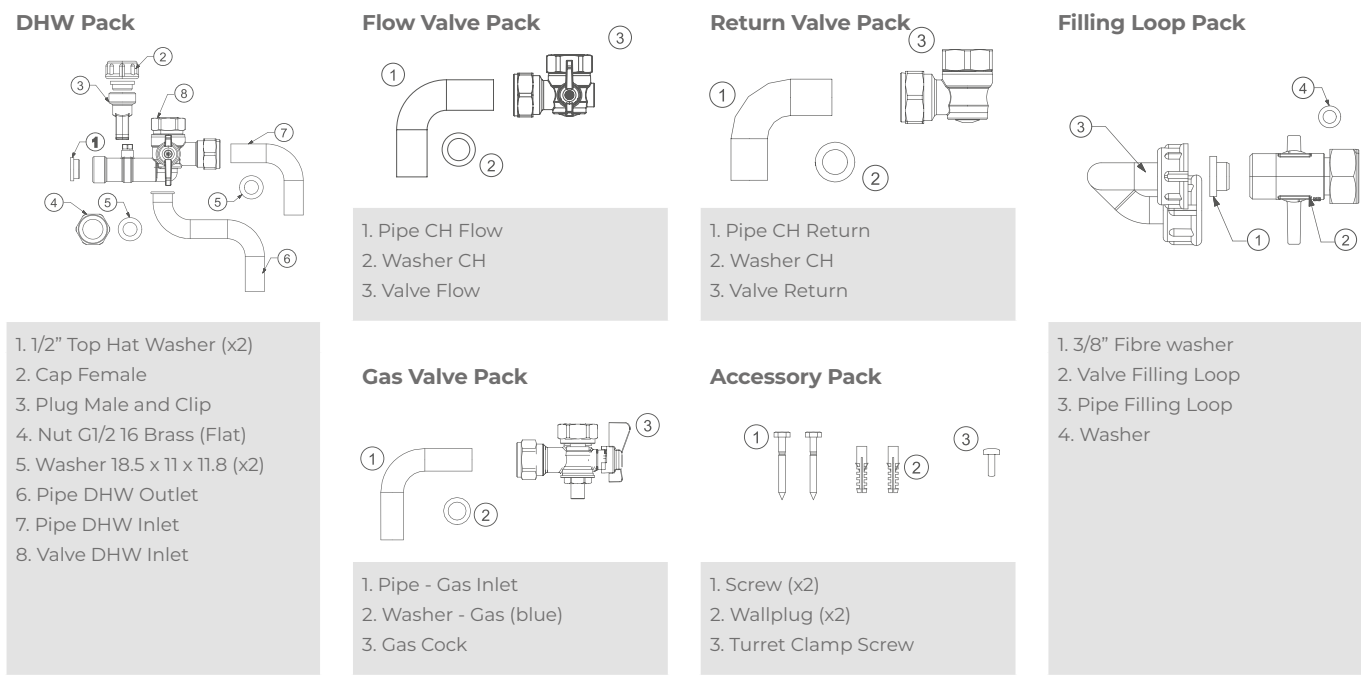
SUPPLIED WITH KESTON SYSTEM/COMBI



KESTON SYSTEM CONNECTION PACK



KESTON COMBI CONNECTION PACK





# TWIN FLUE SYSTEMS

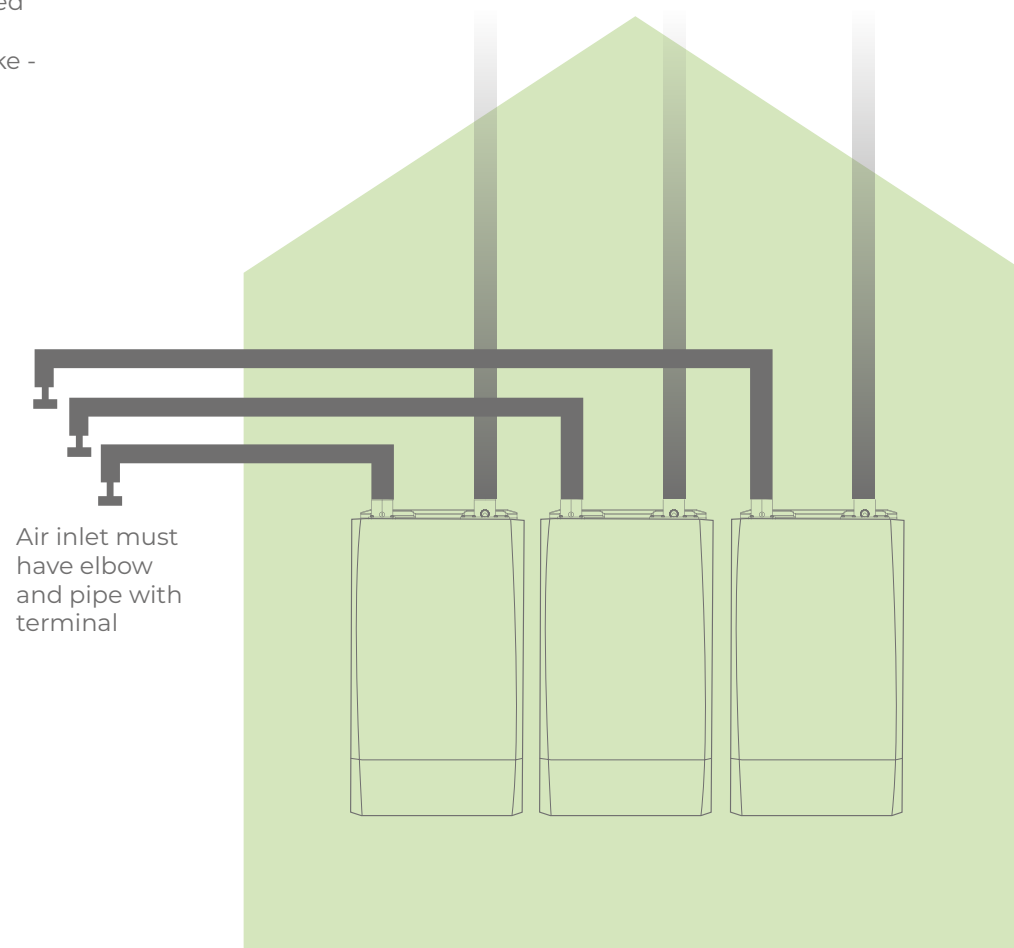
The termination of the flue pipes must be a minimum of 140mm apart.

There is no minimum spacing required when running flue pipes vertically within the building.

150mm above intersection of roof vertical flue pipe to have elbow and terminal pointing away from pitch.

If long runs of vertical pipe are utilised, it is recommended to fit a condensate trap at the base of the vertical section (if offset to flue adaptor).

- Air must be taken from vertical wall below roof level
- No minimum separation required between air intakes required
- No fall required for air intake - can be horizontal



# KESTON BOILER RANGE



## 7 YEAR WARRANTY†

Providing ultimate reliability, Keston boilers are offered with warranties of up to 7 years when fitted with a Keston System Filter



## TWIN FLUE DESIGN

Providing the perfect solution for problematic and awkward installations



## WEATHER COMPENSATOR

All models in the Keston range come complete with weather compensation as standard



## BRITISH BUILT SINCE 2013

All Keston boilers are built in and designed for the British market

† Keston System and Combi: 5 year parts & labour warranty as standard. 7 year warranty when installed with a Keston 22mm System Filter and registered within 30 days of installation. Terms and conditions apply. Keston Heat 2: 2 year parts & labour warranty as standard. 5 year warranty available subject to being commissioned by Keston Boilers. Free Commissioning only available when a Keston 28mm System Filter is installed with a single Keston Heat 2 boiler; not available on multiple (cascade) boiler installations. Terms and conditions apply.

# KESTON HEAT 2

45KW & 55KW OUTPUT NATURAL GAS & LPG



**5**  
YEAR WARRANTY<sup>†</sup>

With its higher outputs, Keston Heat 2 is an ideal solution for both Large Domestic and Commercial installations.

Supported by a 5 year parts and labour warranty and Free Commissioning<sup>†</sup>, Keston Heat 2 is a reliable and efficient wall hung solution. The quality of this product range has been developed through meticulous design, careful component selection and proving; leading to reliability and longevity.

The range provides high efficiencies for both home and business owners, ensuring reduced running costs. This is coupled with low NOx emissions, giving Keston Heat 2 a Class 6 rating.

For Commercial installations, Keston Heat 2 are easy to cascade, with a choice of Frame heights and advanced optional cascade controls; you can find out more about our Frame and Header kits on pages 20-21. Please note that Free Commissioning is not available on multiple (cascade) boiler installations.

## THE FACTS

- 5 year warranty<sup>†</sup>
- Free Commissioning<sup>†</sup>
- Low NOx Class 6
- Inbuilt weather compensation
- Inbuilt pump (low energy modulating)
- Twin flue up to 18m\*
- New Air Inlet Kit for Open Flue (B23) installations
- High 5:1 turndown
- Small installation footprint
- 50mm muPVC (PVC-C) solvent weld flue allowing simple, cost effective installations\*\*
- Cascade controls option
- Easy servicing with 3 removable sides
- Built in, serviceable Non-Return Valve



Install the Keston 28mm system filter with a Keston Heat 2 boiler to receive FREE COMMISSIONING<sup>†</sup>



## 5 YEAR WARRANTY<sup>†</sup>

Providing ultimate reliability, Keston Heat 2 boilers are offered with a 5 year warranty when commissioned by Keston Boilers



## TWIN FLUE DESIGN

Providing the perfect solution for problematic and awkward installations



## WEATHER COMPENSATOR

All models in the Keston range come complete with weather compensation as standard



## FRAME AND HEADER KITS

Able to facilitate up to 6 Keston Heat boilers in cascade



## MODULATING PUMP

Keston Heat boilers come with a low energy modulating pump which complies with energy efficiency requirements



## BRITISH BUILT SINCE 2013

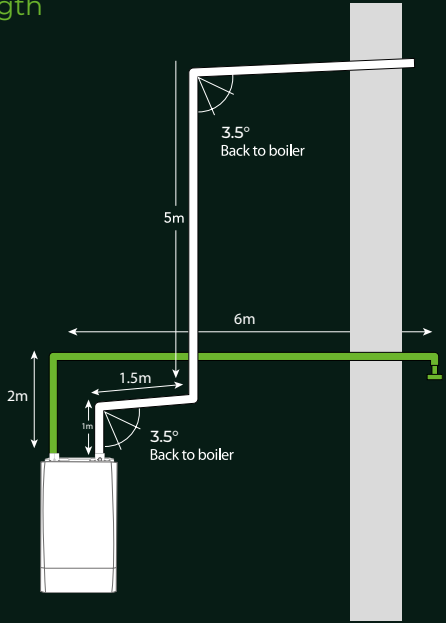
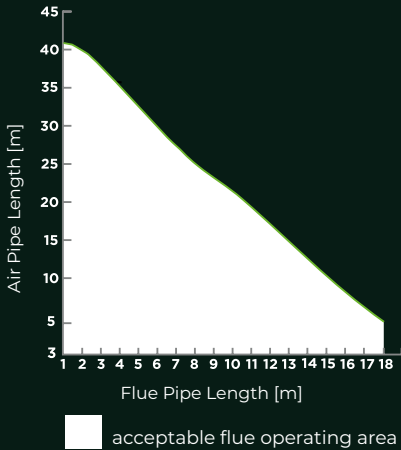
All Keston boilers are built in and designed for the British market

<sup>†</sup> 2 year parts & labour warranty as standard. 5 year warranty available subject to being commissioned by Keston Boilers. Free Commissioning only available when a Keston 28mm System Filter is installed with a single Keston Heat 2 boiler; not available on multiple (cascade) boiler installations. Terms and conditions apply. \* For maximum total equivalent flue length please refer to the installation instructions for full details. \*\* The only systems approved for this application are: Marley muPVC (PVC-C) Solvent Weld Waste System (50mm), Polypipe System 2000 muPVC (PVC-C) Solvent Weld Waste System (50mm), Polypipe Terrain Solvent Weld System (50mm) and Wavin Osma PVC-C Solvent Weld System (50mm). Please use the recommended Solvent Weld Cement for each system.



# FLUE

Keston Heat 2 45 - Flue & Air Pipe Length



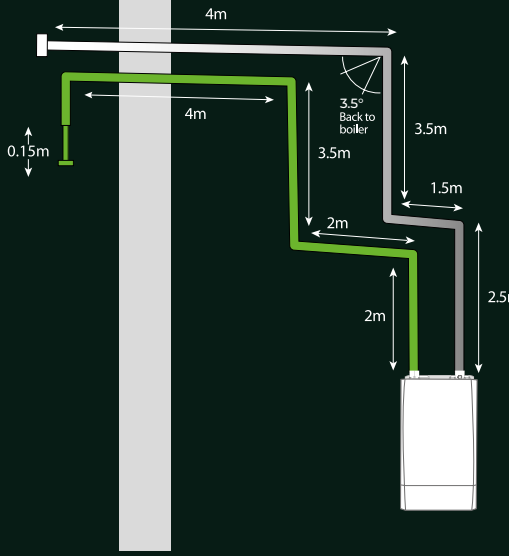
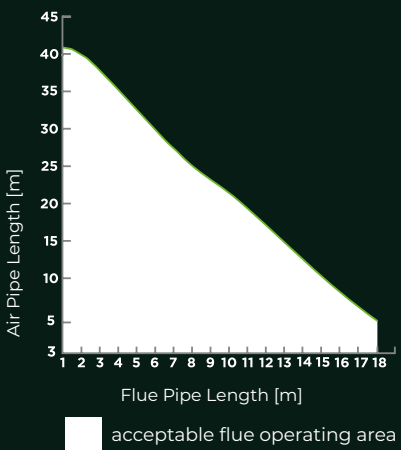
C53 HORIZONTAL

Calculations

Flue  
Elbows 3 x 1m = 3m  
Straights 4+5+1.5+1 = 11.5m  
Total = 14.5m

Air  
Elbows 2 x 1m = 2m  
Straights 6+2+0.1m = 8.1m  
Total = 10.1m

Keston Heat 2 55 - Flue & Air Pipe Length



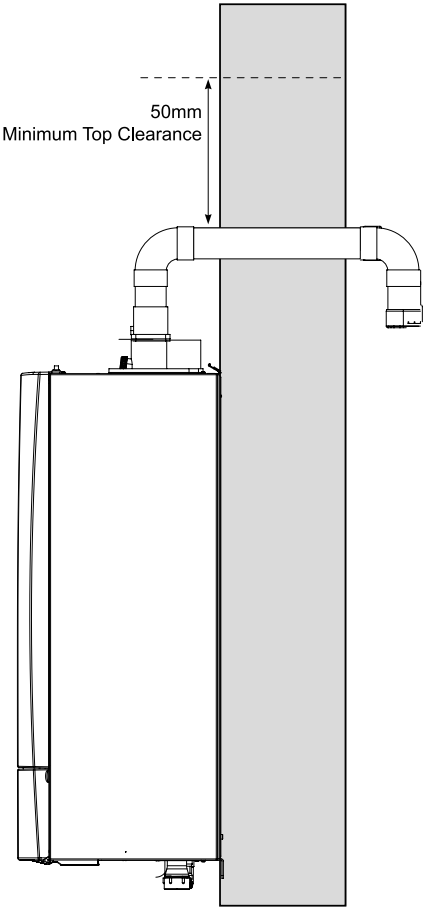
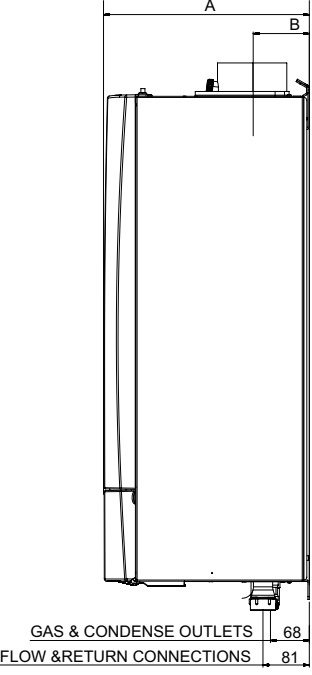
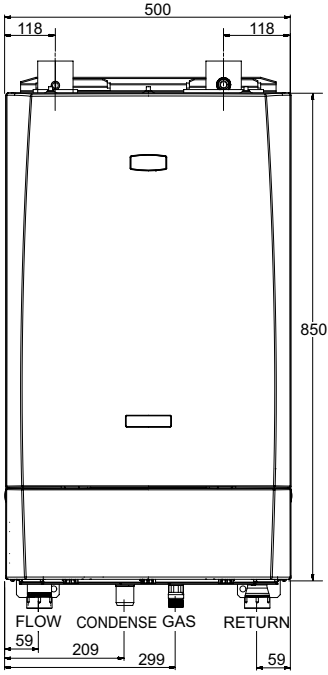
C13 HORIZONTAL

Calculations

Flue  
Elbows 3 x 1m = 3m  
Straights 2.5+1.5+1.5+4 = 9.5m  
Total = 12.5m

Air  
Elbows 4 x 1m = 4m  
Straights 2+2+3.5+4+0.15 = 11.65m  
Total = 15.65m

# DIMENSIONS



## KESTON HEAT 2

Height	850mm
Width	500mm
Depth	360mm

The following minimum clearances must be maintained for operation and servicing.  
Front of boiler - 450mm\*  
Sides of boiler - 25mm  
Above boiler - 50mm above the flue  
Below boiler - 300mm  
Clearance between multiple boiler installations - 25mm

# SPECIFICATION DATA



### CENTRAL HEATING

			45	45P	55	55P
Boiler Output	Max	kW	42.6	42.6	52.1	52.1
(Non Condensing) Mean 70°C	Min	kW	12.0	12.0	12.0	12.0
Boiler Output	Max	kW	45.0	45.0	55.0	55.0
(Condensing) Mean 40°C	Min	kW	12.7	12.7	12.7	12.7
Boiler Input Net	Max	kW	43.2	43.2	52.7	52.7
	Min	kW	12.2	12.2	12.2	12.2
Boiler Input Gross	Max	kW	47.9	47.9	58.5	58.5
	Min	kW	13.5	13.5	13.5	13.5
Gas Consumption / Rate	Max	m³/h	4.56	1.78	5.57	2.18
	Max	ft³/h	161.2	62.9	196.9	76.8
Flue Gas Flow Rate	Max	m³/h	65.8	68.03	80.6	83.71
	Max	ft³/h	2323.7	2402.5	2846.4	2,2956.2

### OTHERS

			45	45P	55	55P
Efficiency	Seasonal	%	96	96	96.7	96.7
	SEDBUK 2009	%	89.2	89.2	89.6	89.6
Seasonal Space Heating Efficiency Class			A	A	A	A
NOx	Weighted	mg/kWh	28.6	43.1	35.4	48.4
	Classification		Class 6	Class 6	Class 6	Class 6
CO <sub>2</sub> (±0.5)	Max	%	9.5	10.8	9.7	10.7
	Min	%	8.7	9.9	8.7	9.9

### GENERAL DATA

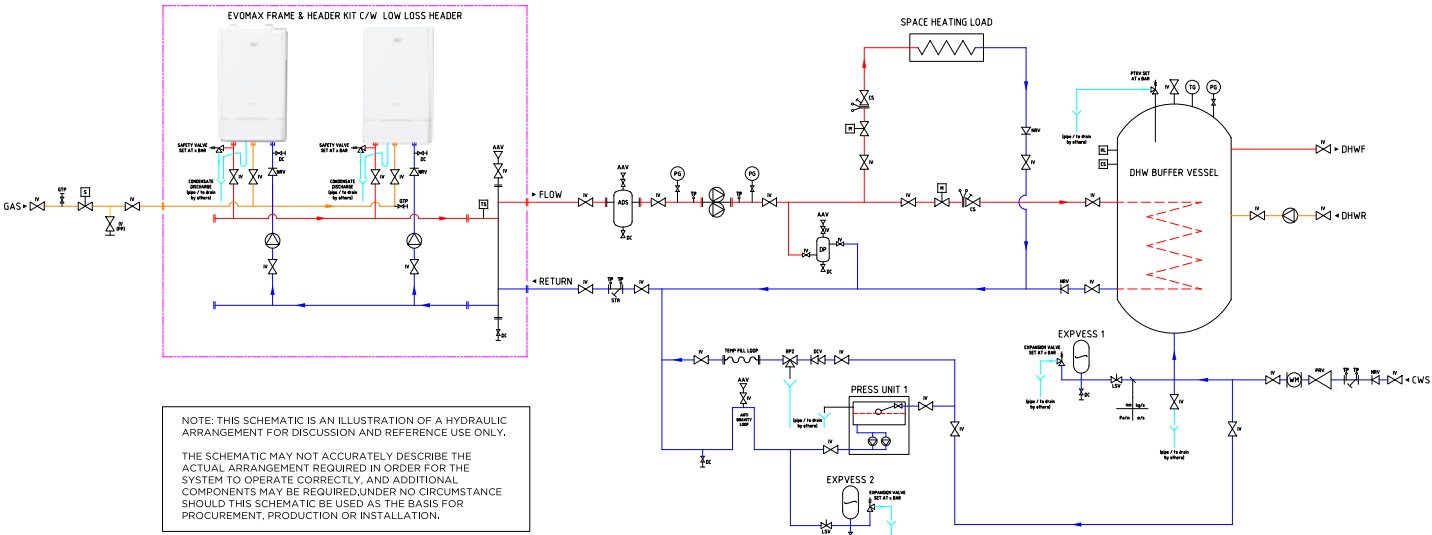
		45	45P	55	55P
Max Horizontal Flue Length	m	21 Flue / 2 Air	13 Flue / 1 Air	17 Flue / 2 Air	17 Flue / 1 Air
Max Horizontal Flue Length (Parallel)	m	15 Flue / 15 Air	9.5 Flue / 9.5 Air	15 Flue / 15 Air	12.25 Flue / 12.25 Air
Flue Terminal Diameter	mm	50			
Gas Supply		2H - G20 - 20mbar 3P - G20 - 37mbar 2H - G20 - 20mbar 3P - G20 - 37mbar			
Gas Supply Connection		G 3/4			
Flow Connection		G 1 1/4			
Return Connection		G 1 1/4			
Max Pressure (Sealed System)	bar (psi)	6.0 (87.0)			
Maximum Static Head	m	61.0			
Electricity Supply		230V - 50Hz			
Fuse Rating	A	4.0			
Power Consumption	W	180	180	241	241
IP Rating		IP4XD			
Condensate Drain	mm	25			
Water Content	l	5.0			
Dry Weight	kg	60.10			

### MULTI BOILER INSTALLATIONS - SYSTEM IN CASCADE

Systems that require a heat load greater than the output of a single boiler capacity can be easily achieved by fitting the required number of units in cascade. The Keston Heat 2 range has a turndown rate of 5:1 allowing system requirements to be easily matched.

In installations where the heat load is greater than the boiler capacity an ideal solution is to use multiple boiler arrangements.

Use Varican modules to control all boilers on a cascade through a Principle and Secondary set up.





# FRAME AND HEADER KITS

## Install Up To 6 Boilers in Cascade with Keston Heat 2 Frame and Header Kits.

The Keston Heat 2 Frame and Header kits offer a simple system installation allowing for outputs from 90kW to 330kW

### THE FACTS

#### Small footprint

- 560mm depth for all variants of the Keston Heat 2 frame and header, with boilers in cascade
- Standard Height and Low Height (4 boiler maximum cascade) frames available

#### Low lift weight

- Lift weights are as low as possible

#### Time saving

- The flow and return and the low loss header are pre insulated which improves efficiency and reduces heat loss, as well as reducing installation time

#### Controls

- Varican Principle and Secondary modules can be used to sequence and cascade boilers independently without a complex Building Management System.
- Extension Module kit can manage 2 variable temperature mixing circuits

### FLEXIBILITY OF SITING

#### Flue system

- The twin flue system allows awkward and difficult to site flue runs up to 18m\*
- Simple 50mm muPVC (PVC-C)\*\* solvent weld flue reduces time, cost and labour
- For increased flexibility of siting, additional elbows and bends are available for both flue systems
- Only 1m reduction in equivalent flue length per 90° bend
- Gas pressure test point fitted to both ends of the gas header to allow left or right hand installation
- New Flue Connector Air Inlet Kit allows Open Flue (B23) installations

\* For the maximum total equivalent flue length, please refer to the installation manual. \*\* The only systems approved for this application are: Marley muPVC (PVC-C) Solvent Weld Waste System (50mm), Polypipe System 2000 muPVC (PVC-C) Solvent Weld Waste System (50mm), Polypipe Terrain Solvent Weld System (50mm) and Wavin Osma PVC-C Solvent Weld System (50mm). Please use the recommended Solvent Weld Cement for each system. Please see page 9 for more details.

# KESTON HEAT 2

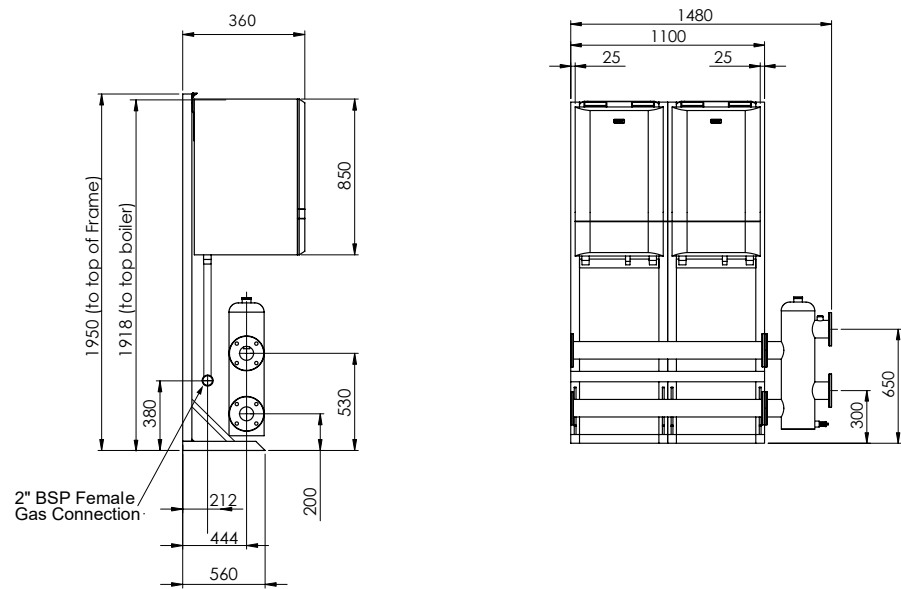
## FRAME & HEADER ACCESSORIES

CHOOSE A FRAME KIT	CHOOSE A HEADER KIT	CHOOSE HYDRAULIC SEPARATION
Standard Height Up to 6 boilers 355013 1 frame required per boiler i.e. a 6 boiler cascade requires 6 frames	Standard Height Frame	Low Loss / Mixing Header
Low Height Inline Up to 4 boilers Included with Low Height Header Kit	2 boilers (DN80) 355084	DN50 355090
	2 boilers (DN100) 355111	DN65 355091
	3 boilers (DN80) 355085	DN80 355019
	3 boilers (DN100) 355112	DN100 355092
	4 boilers (DN100) 355086	
	5 boilers (DN100) 355087	
	6 boilers (DN100) 355088	
	Low Height Frame	
	1 boiler (DN50) 355093	
	2 boilers (DN65) 355094	
	3 boilers (DN80) 355095	
	4 boilers (DN100) 355096	

Boilers not included with Frame or Header Kits; please remember to add them to your order.

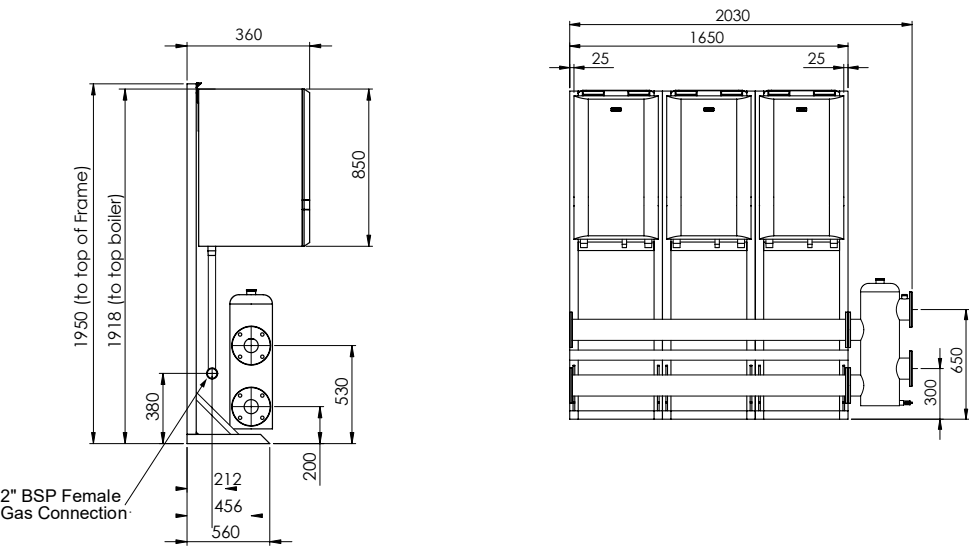
STANDARD HEIGHT INLINE CASCADES

2 X KESTON HEAT 2



UIN	DN FLANGE SIZE	SUITABLE FOR
355084	DN80	2 x Heat 2 boilers
355111	DN100	2 x Heat 2 boilers

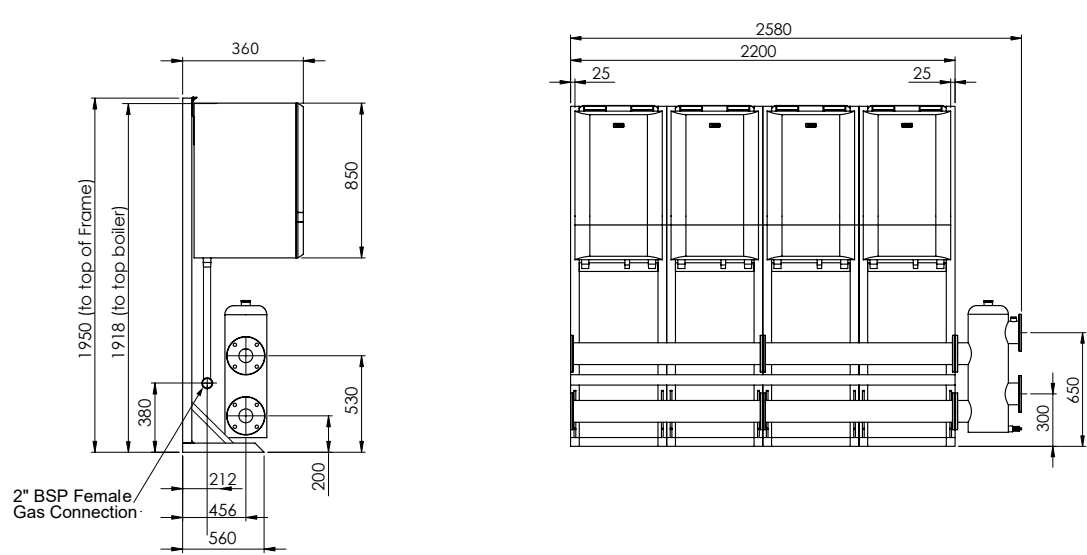
3 X KESTON HEAT 2



UIN	DN FLANGE SIZE	SUITABLE FOR
355085	DN80	3 x Heat 2 boilers
355112	DN100	3 x Heat 2 boilers

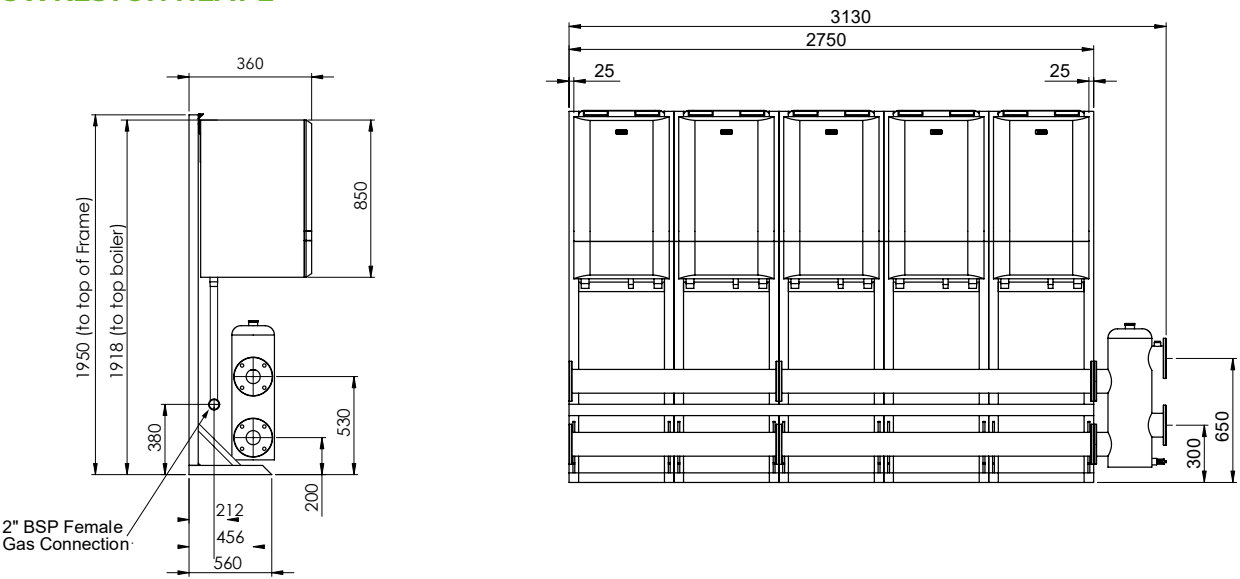
STANDARD HEIGHT INLINE CASCADES

4 X KESTON HEAT 2



UIN	DN FLANGE SIZE	SUITABLE FOR
355087	DN100	4 x Heat 2 boilers, 30 – 150kW with PHEX or (M)LLH separation

5 X KESTON HEAT 2

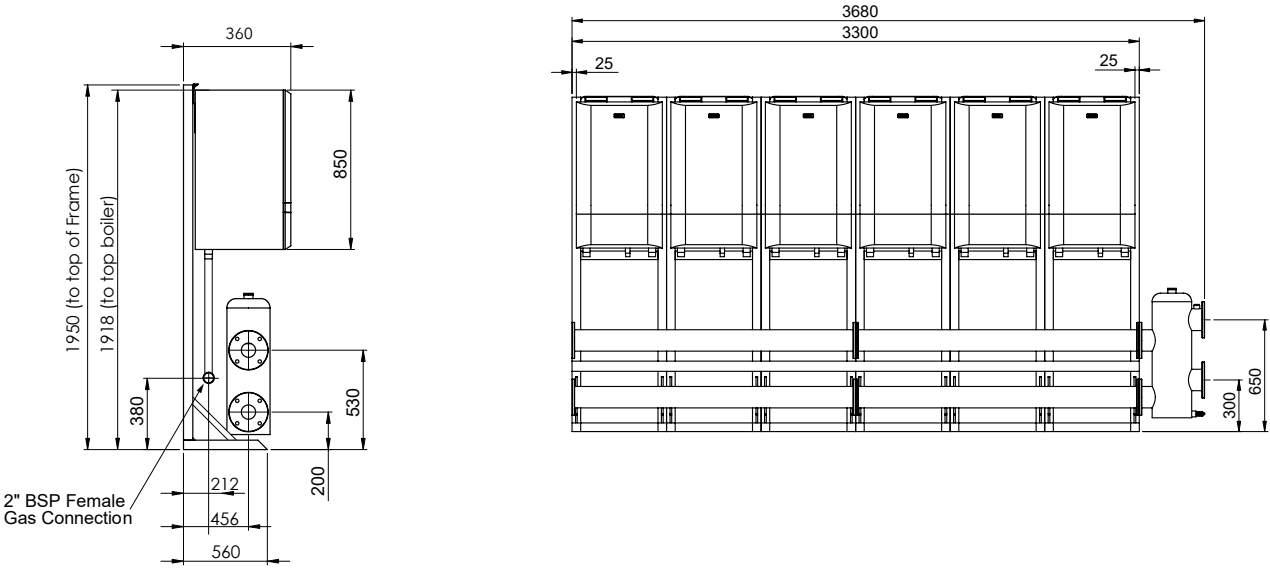


UIN	DN FLANGE SIZE	SUITABLE FOR
355087	DN100	5 x Heat 2 boilers



STANDARD HEIGHT INLINE CASCADES

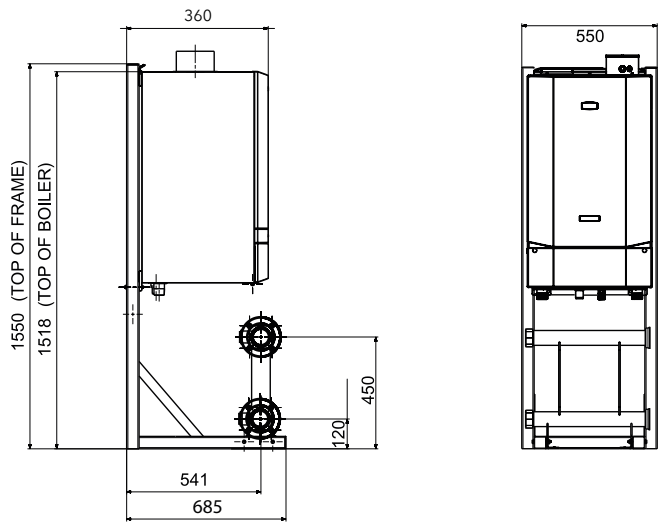
6 X KESTON HEAT 2



UIN	DN FLANGE SIZE	SUITABLE FOR
355088	DN100	6 x Heat 2 boilers

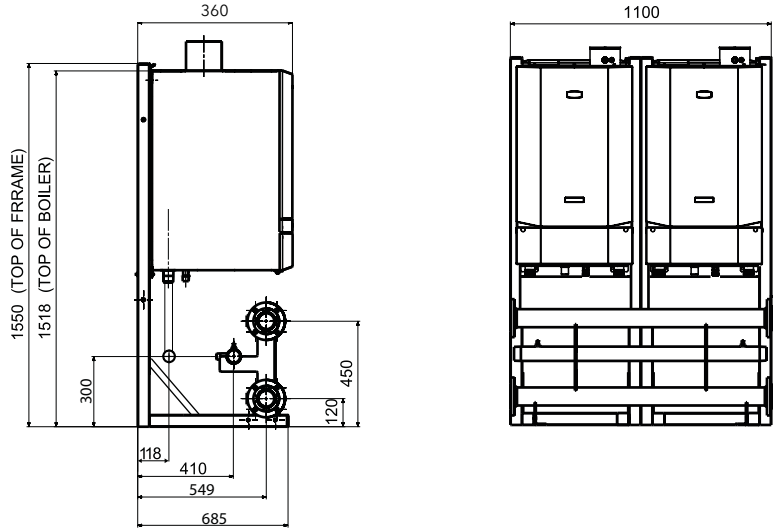
LOW HEIGHT INLINE CASCADES

1 X KESTON HEAT 2



UIN	DN FLANGE SIZE	SUITABLE FOR
355093	DN50	1 x Heat 2 boilers

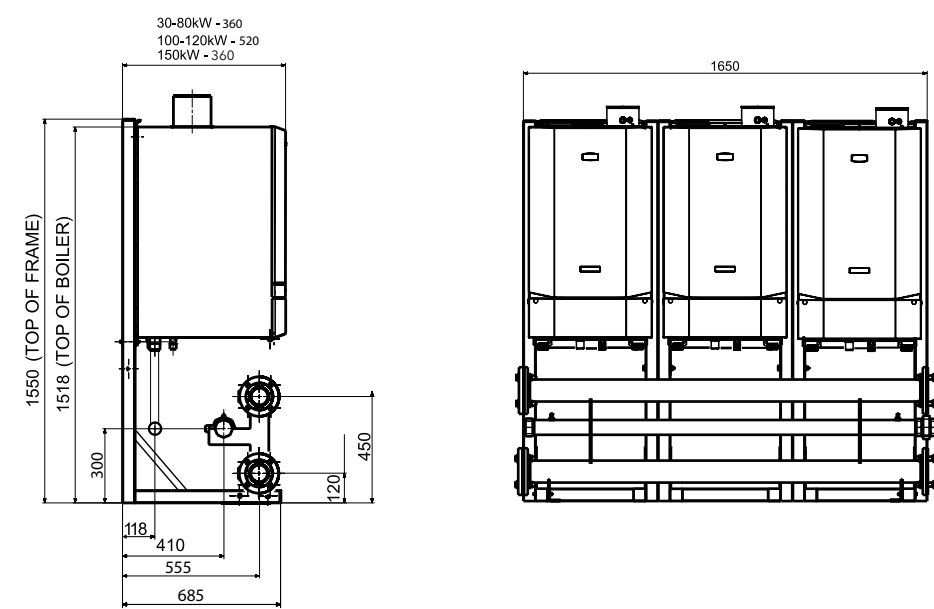
2 X KESTON HEAT 2



UIN	DN FLANGE SIZE	SUITABLE FOR
355094	DN65	2 x Heat 2 boilers

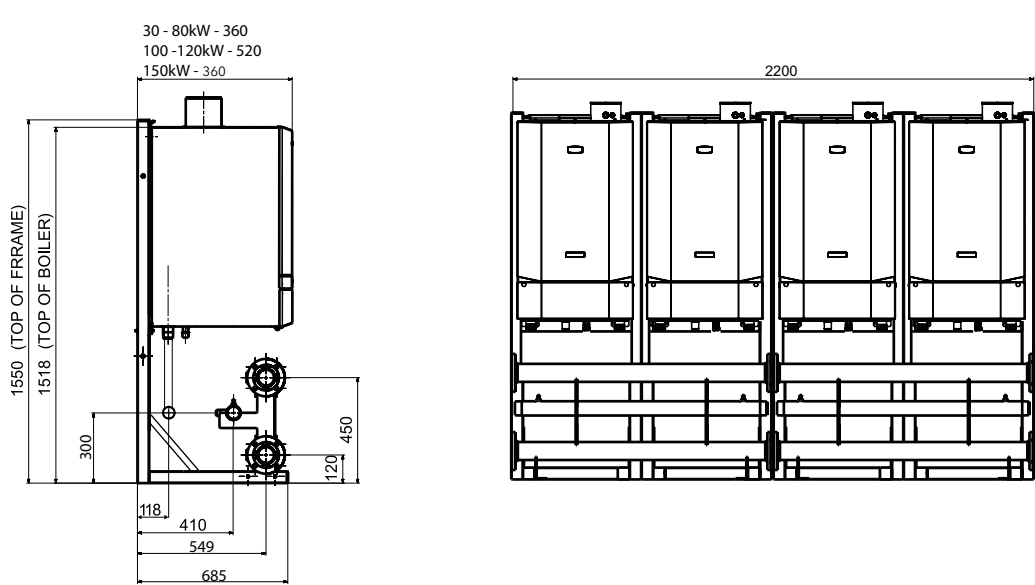
LOW HEIGHT INLINE CASCADES

3 X KESTON HEAT 2



UIN	DN FLANGE SIZE	SUITABLE FOR
355095	DN80	3 x Heat 2 boilers

4 X KESTON HEAT 2



UIN	DN FLANGE SIZE	SUITABLE FOR
355096	DN100	4 x Heat 2 boilers



# KESTON SYSTEM

30kW Output



**7**  
YEAR WARRANTY<sup>†</sup>

## High SEDBUK efficiency rating and easy to install.

Keston System boiler provides a simple and reliable solution for a wide variety of sealed domestic systems.

Available with a 30kW output, Keston System provides a dependable and efficient solution for new and replacement installations. Time saving push & clip flue spigot connections and a wide range of alternative flueing solutions help to ensure the product is installed quickly in virtually any domestic situation.

With a lightweight design, concealed connections at the base and no compartment ventilation required, Keston System can be conveniently fitted out of sight into a standard kitchen cupboard\*.

Complete with a 7 year parts and labour warranty<sup>†</sup>, Keston System boiler provides simple heating control, all from a single compact appliance.

### THE FACTS

- 7 year warranty<sup>†</sup>
- Easy to see pressure gauge
- Large backlit display with user friendly controls
- Low lift weight
- Low component count maximising reliability
- Compact dimensions
- Twin flue up to 27m\*\*
- 50mm muPVC (PVC-C) solvent weld flue allowing simple, cost effective installations\*\*\*
- Weather compensation supplied as standard
- Inbuilt frost protection
- Fully modulating
- LPG conversion kit available

**7**  
YEAR WARRANTY<sup>†</sup>

Install the Keston 22mm system filter with a Keston System boiler to receive a 7 year warranty<sup>†</sup>



### 7 YEAR WARRANTY<sup>†</sup>

Providing ultimate reliability, Keston System boilers are offered with a 7 year warranty when fitted with a Keston 22mm System Filter



### TWIN FLUE DESIGN

Providing the perfect solution for problematic and awkward installations



### WEATHER COMPENSATOR

All models in the Keston range come complete with weather compensation as standard



### BRITISH BUILT SINCE 2013

All Keston boilers are built in and designed for the British market

<sup>†</sup> 7 year warranty when installed with a Keston 22mm System Filter and registered within 30 days of installation. 5 year parts & labour warranty as standard. Terms and conditions apply.

\* Please check cupboard size prior to installation

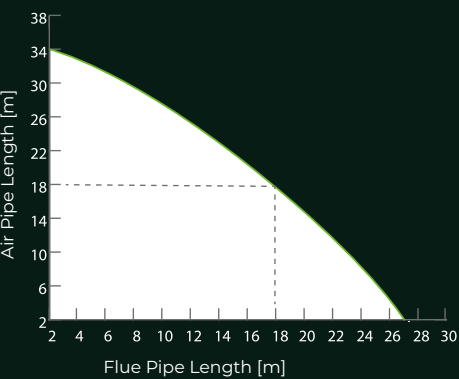
\*\* For the maximum total equivalent flue length, please refer to the installation manual.

\*\*\* The only systems approved for this application are: Marley muPVC (PVC-C) Solvent Weld Waste System (50mm), Polypipe System 2000 muPVC (PVC-C) Solvent Weld Waste System (50mm), Polypipe Terrain Solvent Weld System (50mm) and Wavin Osma PVC-C Solvent Weld System (50mm). Please use the recommended Solvent Weld Cement for each system. Please see page 9 for more details.

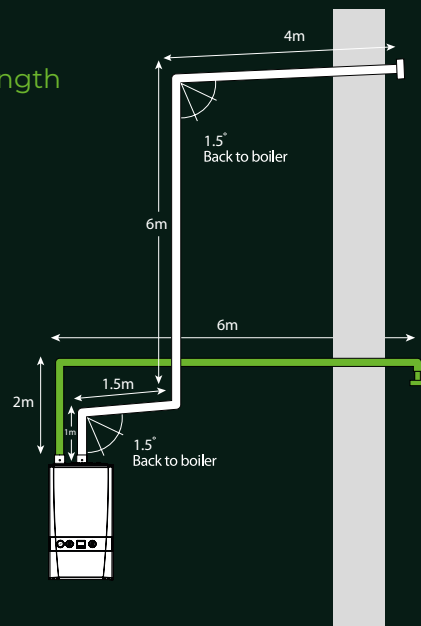


# FLUE

Keston System S30 - Flue & Air Pipe Length



acceptable flue operating area

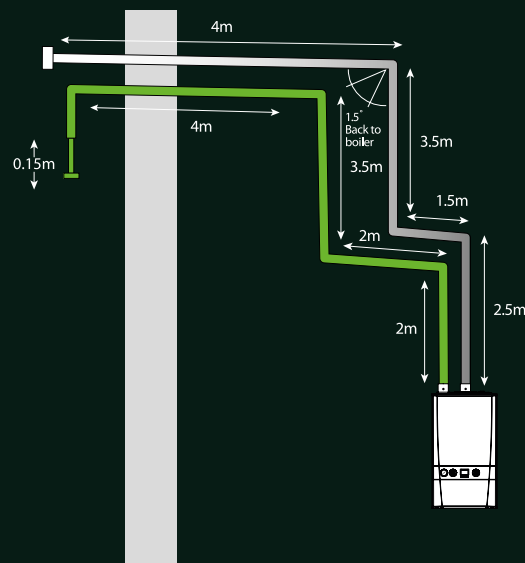


## C53 HORIZONTAL

### Calculations

Flue  
Elbows 3 x 1m = 3m  
Straights 4+6+1.5+1 = 12.5m  
Total = 15.5m

Air  
Elbows 2 x 1m = 2m  
Straights 6+2+0.1+1 = 8.1m  
Total = 10.1m



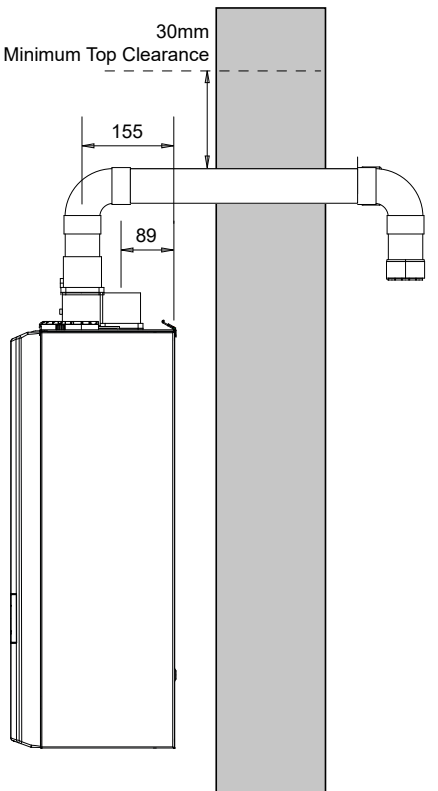
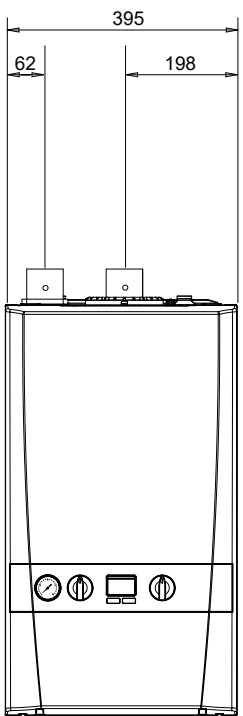
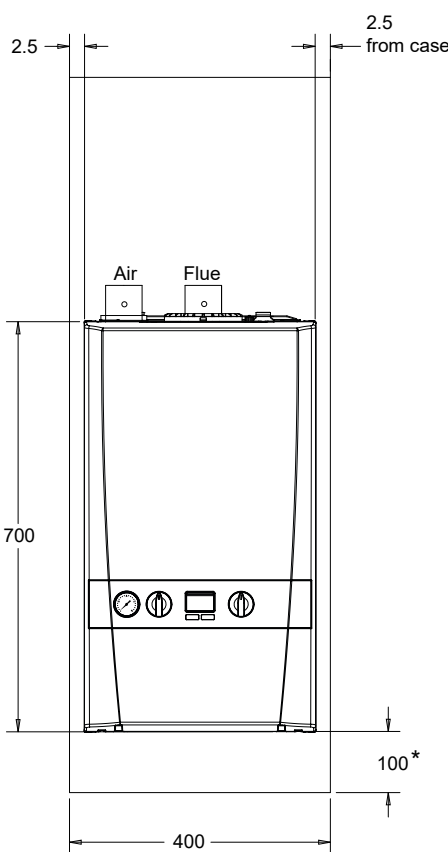
## C13 HORIZONTAL

### Calculations

Flue  
Elbows 3 x 1m = 3m  
Straights 4+3.5+1.5+2.5 = 11.5m  
Total = 14.5m

Air  
Elbows 4 x 1m = 4m  
Straights 2+2+3.5+4+0.15 = 11.65m  
Total = 15.65m

# DIMENSIONS



## KESTON SYSTEM

Height	700mm
Width	395mm
Depth	278mm

The following minimum clearances must be maintained for operation and servicing.  
Front of boiler - 450mm<sup>†</sup>  
Sides of boiler - 2.5mm  
Above boiler - 30mm above the flue  
Below boiler - 100mm<sup>†</sup>

# SPECIFICATION DATA

## CENTRAL HEATING

S30			
CH Output @ 70°C	Max	kW	30.3
	Min	kW	6.1
CH Output @ 40°C	Max	kW	31.0
	Min	kW	6.4
CH Input	Nett CV Max	kW	30.4
	Nett CV Min	kW	6.1
CH Input	Gross CV Max	kW	33.7
	Gross CV Min	kW	6.7
CH Gas Consumption	Max	m3/h	3.135
	Min	m3/h	0.622

## OTHERS

S30			
Seasonal Efficiency	SEDBUK 2005	%	91.1
	SEDBUK 2009	%	89.6
Seasonal Space Heating Efficiency Class			A
NOx Classification			Class 5

## GENERAL DATA

S30		
Max Horizontal Flue Length	m	27 Flue / 2 Air
Max Horizontal Flue Length (Parallel)	m	18 Flue / 18 Air
Flue Terminal Diameter	mm	50
Gas Supply		2H - G20 - 20mbar
Gas Supply Connection		15mm copper compression
Injector Size	mm	4.65
Flow Connection (CH)		22mm copper compression
Return Connection (CH)		22mm copper compression
Average Flue Temp - Mass Flow Rate		69°C - 13g/s
CO <sub>2</sub> Content (±0.7) (Max CH)	%	9.3
CO <sub>2</sub> Content (±0.7) (Min CH)	%	8.8
Max Working Pressure (Sealed Systems)	bar (psi)	2.5 (36.3)
Electrical Supply		230V - 50Hz
Power Consumption	W	100
Fuse Rating		External 3A / Internal: T4A HRC L250V
Water Content	l (gal)	1.2 (0.26)
Weight (Packed)	kg	31.6
Maximum Installation Weight	kg	26.2



# KESTON COMBI

30kW & 35kW Output



**7**  
YEAR WARRANTY†

## Complete hassle-free home comfort from a single compact appliance.

Offering first-class comfort in a compact, wall-hung appliance small enough to fit inside a standard kitchen cupboard\*, the Keston Combi range enables heating and hot water to be controlled independently, ensuring maximum comfort and efficiency.

Keston Combi can be sited almost anywhere in the home, without the need for a separate tank. And because it connects to the unique Keston Twin Flue system, the boiler can be situated anywhere up to 27\*\* metres from the flue outlet, helping to provide further flexibility when required.

Fully modulating, and with weather compensation, Keston Combi provides excellent energy savings, making it the perfect choice for new or replacement installations alike.

### THE FACTS

- 7 year warranty†
- Easy to see pressure gauge
- Large backlit display with user friendly controls
- Low lift weight
- Low component count maximising reliability
- Compact dimensions
- Twin flue up to 27m\*\*
- 50mm muPVC (PVC-C) solvent weld flue allowing simple, cost effective installations\*\*\*
- Weather compensator supplied as standard making Keston Combi **Boiler Plus compliant out of the box**
- Pre-fitted filling loop
- Inbuilt frost protection
- Fully modulating
- LPG conversion kit available

**7**  
YEAR WARRANTY†

Install the Keston 22mm system filter with a Keston System boiler to receive a 7 year warranty†



### 7 YEAR WARRANTY†

Providing ultimate reliability, Keston Combi boilers are offered with a 7 year warranty when fitted with a Keston 22mm System Filter



### TWIN FLUE DESIGN

Providing the perfect solution for problematic and awkward installations



### WEATHER COMPENSATOR

All models in the Keston range come complete with weather compensation as standard



### BRITISH BUILT SINCE 2013

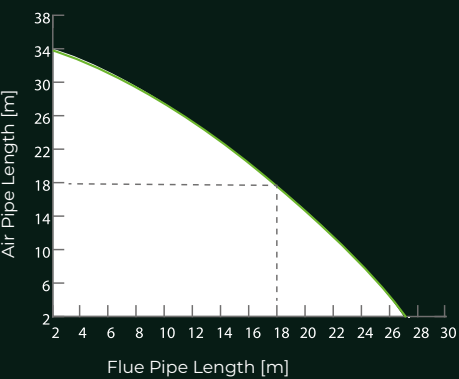
All Keston boilers are built in and designed for the British market

† 7 year warranty when installed with a Keston 22mm System Filter and registered within 30 days of installation. 5 year parts & labour warranty as standard. Terms and conditions apply.\* Please check cupboard size prior to installation.\*\* For the maximum total equivalent flue length, please refer to the installation manual.\*\*\* The only systems approved for this application are: Marley muPVC (PVC-C) Solvent Weld Waste System (50mm), Polypipe System 2000 muPVC (PVC-C) Solvent Weld Waste System (50mm), Polypipe Terrain Solvent Weld System (50mm) and Wavin Osma PVC-C Solvent Weld System (50mm). Please use the recommended Solvent Weld Cement for each system. Please see page 9 for more details.



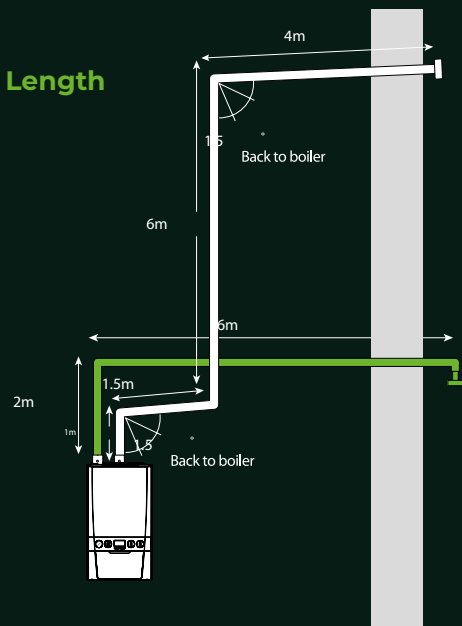
# FLUE

## Keston Combi C30 - Flue & Air Pipe Length



acceptable flue operating area

Graph indicates maximum flue run 27m with 2m air. Also, 18m flue with 18m air pipe for parallel twin flue run.



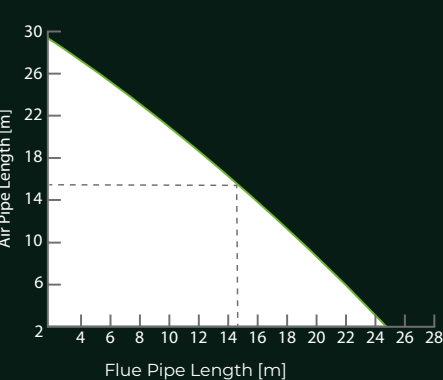
## C53 HORIZONTAL

### Calculations

Flue  
Elbows 3 x 1m = 3m  
Straights 4+6+1.5+1 = 12.5m  
Total = 15.5m

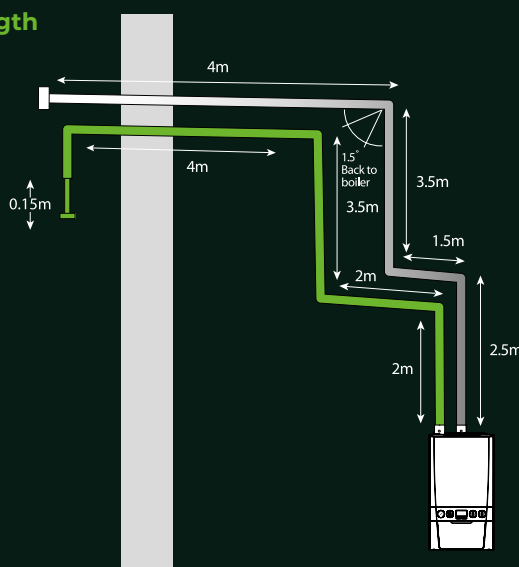
Air  
Elbows 2 x 1m = 2m  
Straights 6+2+0.1+1 = 8.1m  
Total = 10.1m

## Keston Combi C35 - Flue & Air Pipe Length



acceptable flue operating area

Graph indicates maximum flue run 25m with 2m air. Also, 15m flue with 15m air pipe for parallel twin flue run.



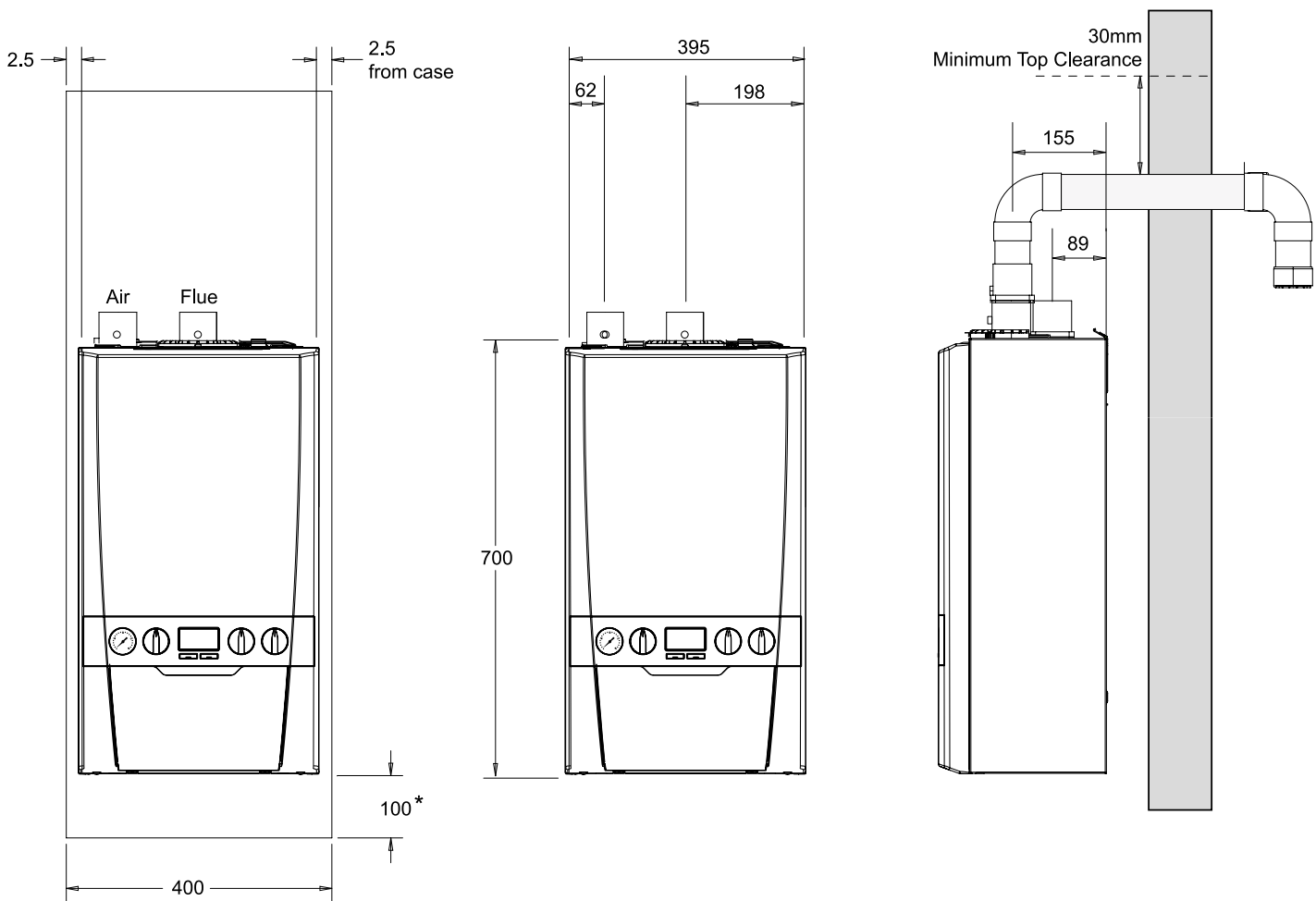
## C13 HORIZONTAL

### Calculations

Flue  
Elbows 3 x 1m = 3m  
Straights 4+3.5+1.5+2.5 = 11.5m  
Total = 14.5m

Air  
Elbows 4 x 1m = 4m  
Straights 2+2+3.5+4+0.15 = 11.65m  
Total = 15.65m

# DIMENSIONS



## KESTON COMBI

Height	700mm
Width	395mm
Depth	278mm

The following minimum clearances must be maintained for operation and servicing.  
Front of boiler - 450mm<sup>†</sup>  
Sides of boiler - 2.5mm  
Above boiler - 30mm above the flue  
Below boiler - 100mm<sup>†</sup>

# SPECIFICATION DATA



## CENTRAL HEATING

			C30	C35
CH Output @ 70°C	Max	kW	24.2	24.2
	Min	kW	6.1	7.1
CH Output @ 40°C	Max	kW	25.6	25.6
	Min	kW	6.4	7.5
CH Input	Nett CV Max	kW	24.3	24.3
	Nett CV Min	kW	6.1	7.1
CH Input	Gross CV Max	kW	27.0	27.0
	Gross CV Min	kW	6.7	7.9
CH Gas Consumption	Max	m³/h	2.512	2.512
	Min	m³/h	0.623	0.734

## HOT WATER

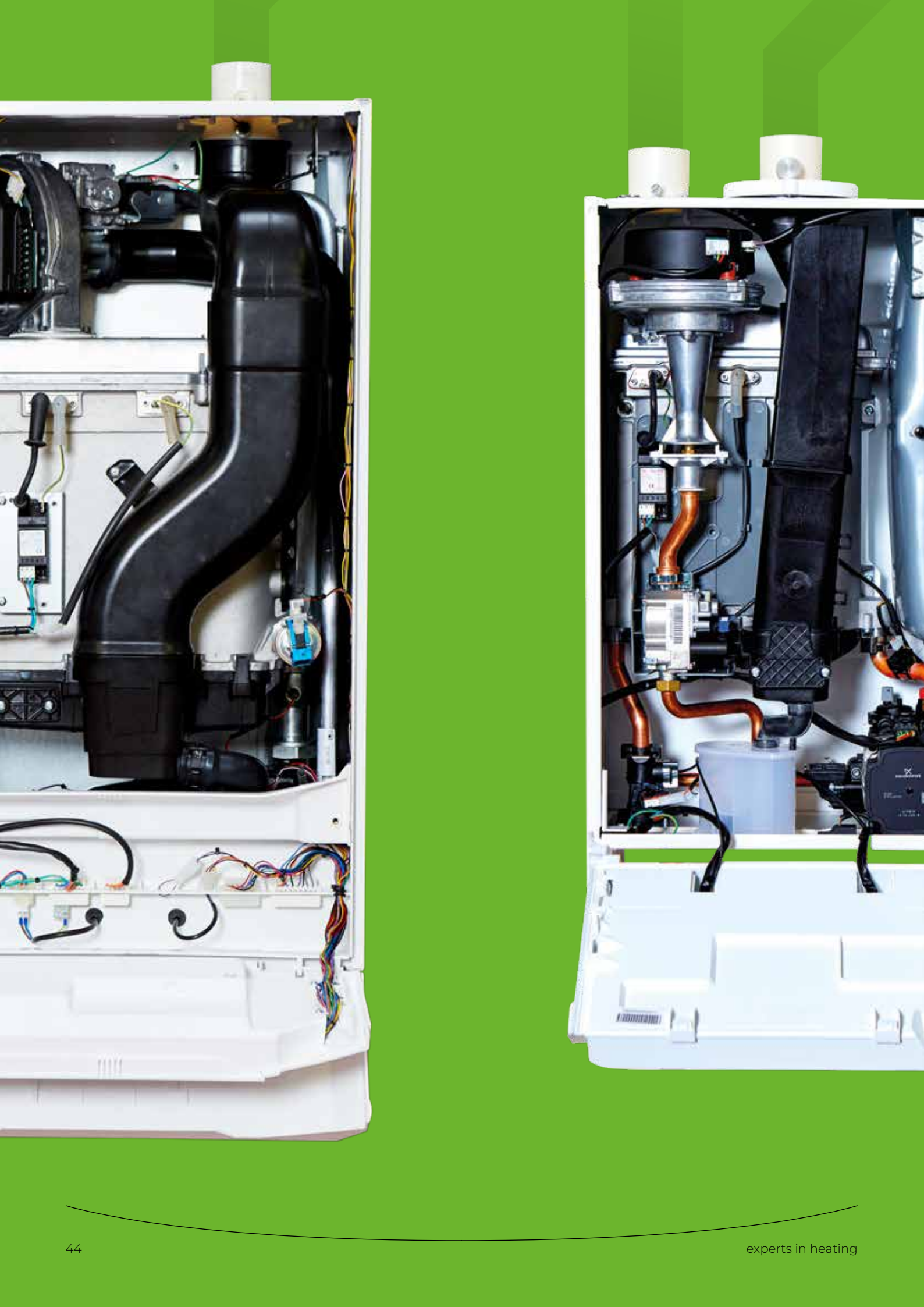
			C30	C35
DHW Output	Max	kW	30.3	35.3
DHW Input	Nett CV Max	kW	30.4	35.4
DHW Input	Gross CV Max	kW	33.7	39.3
DHW Gas Consumption		m³/h	3.135	3.658
DHW Flow Rate at 35°C Rise		l/min	12.4	14.5
DHW Specific Rate		l/min	14.5	16.9

## OTHERS

			C30	C35
Seasonal Efficiency	SEDBUK 2005	%	91.1	91.1
	SEDBUK 2009	%	89.6	89.6
Seasonal Space Heating Efficiency Class			A	A
NOx Classification			Class 5	Class 5

## GENERAL DATA

			C30	C35
Max Horizontal Flue Length	m		27 Flue / 2 Air	25 Flue / 2 Air
Max Horizontal Flue Length (Parallel)	m		18 Flue / 18 Air	15 Flue / 15 Air
Flue Terminal Diameter	mm		50	
Gas Supply			2H - G20 - 20mbar	
Gas Supply Connection			15mm copper compression	
Injector Size	mm		4.65	4.90
Flow Connection (CH)			22mm copper compression	
Return Connection (CH)			22mm copper compression	
Inlet Connection (DHW)			15mm copper compression	
Outlet Connection (DHW)			15mm copper compression	
Average Flue Temp - Mass Flow Rate (DHW)			68°C - 13g/s	73°C - 15g/s
CO <sub>2</sub> Content (±0.7) (Max CH)	%		8.8	8.9
CO <sub>2</sub> Content (±0.7) (Max DHW)	%		9.3	9.5
Max Working Pressure (Sealed Systems)	bar (psi)		2.5 (36.3)	
Max DHW Inlet Pressure	bar (psi) (kPa)		10.0 (145) (1000)	
Min DHW Inlet Pressure	bar (psi) (kPa)		1.3 (18.9) (130)	
Electrical Supply			230V - 50Hz	
Power Consumption	W		101	114
Fuse Rating			External 3A / Internal: T4A HRC L250V	
Water Content (CH)	l (gal)		1.2 (0.26)	
Water Content (DHW)	l (gal)		0.5 (0.11)	
Weight (Packed)	kg		34.4	34.5
Maximum Installation Weight	kg		31.4	31.5



# KESTON SERVICE

Support & Aftersales

When you choose a Keston appliance, you are selecting a solution that has been expertly produced to the highest of standards.

### SUPPORT

When you choose to work with Keston you can be confident to know that you're partnering with a British manufacturer that's supported by a dedicated national service team, delivering help and advice to you and your customers, 364 days a year.

Our rigorous research and development procedures and manufacturing quality control checks ensures that all of our products are produced to the highest of standards, delivering total comfort and peace of mind.

### SERVICE

Our dedicated service team of engineers are fully trained to exacting standards and are Gas Safe Registered, providing one-to-one advice on the road, over the phone or via the net to thousands of customers each year.

### PARTS

Keston's extensive quality testing procedures ensure that all of our products are manufactured to the highest of quality standards.

### AFTERSALES

Supported by a dedicated national service team, delivering help and advice to you and your customers, 364 days a year, all of Keston's products come with their own dedicated warranty. Each product design undergoes a rigorous research and development procedure and manufacturing quality control check to ensure that every product is produced to the highest of standards, helping to deliver total home comfort and peace of mind. In the unlikely event that a spare part is required, you can be rest assured that most parts are readily available to order via your local spares outlet up to 10 years after appliance production has ceased.

Keston spare parts can be obtained from any of Ideal Heating's nationwide network of approved stockists.



Installer helpline &  
Homeowner helpline

**01482 443 005**



Spares Department

**01482 443 005**

For information about any  
Keston spare parts

For a list of stockists, please call  
our Spares Department or visit  
our website [keston.co.uk](http://keston.co.uk)



# KESTON TRAINING

Here at Keston, we understand that having the confidence to be able to specify and install a wide range of products is an essential part of your day-to-day job.

With this in mind, we have created a wide range of comprehensive training courses, utilising both classroom and hands-on learning techniques to enable you to become a more efficient, skilled heating engineer.

All of our training courses have been designed to ensure that you get the most out of the time spent off the road and can be easily adapted to suit the desired knowledge level.

So, if you're looking to refresh your existing knowledge, or to learn how to install something completely new, Keston has a course for you.

**For more information, please contact the training department on 01482 443 005.**

## LOCATIONS

Centres of Excellence in Hull, Leeds and Reading.

These are comprehensive one-day courses, which can be mixed and matched for individual installation and servicing companies. The course uses a simple step-by-step approach with hands on training to ensure all aspects of commissioning, servicing and fault finding can be dealt with quickly and efficiently.

If you are an installer/service engineer you must be Gas Safe Registered to attend a course.

## COURSE CONTENT

Each course covers the following:

- **Product range overview**
- **Product specification**
- **Installation requirements**
- **Flue and accessory options**
- **Component review overview**
- **Component change and repair**
- **User controls**
- **Sequence of operation**
- **Fault finding**

The course involves discussion with tutors, demonstrations with practical advice. Lunch and refreshments are provided and a certificate is awarded upon completion.



# PRODUCT INFORMATION



## BOILER PACKAGED

KESTON SYSTEM	KESTON COMBI	KESTON HEAT 2
355063 - Keston System S30 Boiler Packaged	355061- Keston Combi C30 Boiler Packaged 355062 - Keston Combi C35 Boiler Packaged	355123 - Keston Heat 45 Boiler Packaged 355124 - Keston Heat 55 Boiler Packaged 355125 - Keston Heat 45P Boiler Packaged 355126 - Keston Heat 55P Boiler Packaged

## ACCESSORIES

KESTON SYSTEM	KESTON COMBI	KESTON HEAT 2
355005 - Keston Twin Combi/ System Stand Off Kit 355006 - Keston Air Terminal Finishing Kit 355007 - Keston Flue Sleeve Kit 355082 - Keston System Filter 28mm 355071 - Keston System S30 LPG Conversion Kit	355005 - Keston Twin Combi/ System Stand Off Kit 355067 - 7 Day Plug in Electronic timer 355066 - RF Electronic Programmable Stat 355006 - Keston Air Terminal Finishing Kit 355007 - Keston Flue Sleeve Kit 355081- Keston System Filter 22mm 355069 - Keston Combi C30 LPG Conversion Kit 355070 - Keston Combi C35 LPG Conversion Kit	355006 - Keston Air Terminal Finishing Kit 355082 - Keston System Filter 28mm 355128 - Varican Gateway Principle Kit 355129 - Varican Gateway Secondary kit 355130 - Extension Module Kit 355131 - Flow Sensor Immersion Pocket Kit 355132 - Flow Sensor Strap On Kit 355133 - Keston Heat and Heat 2 Room Sensor Kit 355135 - Keston Heat 2 OPENTHERM 2 Channel Programmable Room Control 355136 - Safety Interlock Kit 355137 - 0-10V Pump Control Kit 355138 - KNX Gateway 355139 - Flue Connector Air Inlet Kit

## FRAME AND HEADER KITS

KESTON HEAT 2	KESTON HEAT 2
355013 - Single Frame Standard Height Inline Kit 355089 - Single Frame Low Height Inline Kit 355084 - Header Inline DN80 x 2 Boilers Kit 355085 - Header Inline DN80 x 3 Boilers Kit 355111 - Header Inline DN100 x 2 Boilers Kit 355112 - Header Inline DN100 x 3 Boilers Kit 355086 - Header Inline DN100 x 4 Boilers Kit 355087 - Header Inline DN100 x 5 Boilers Kit 355088 - Header Inline DN100 x 6 Boilers Kit	355093 - Low Height Frame & Header DN50 x 1 Boiler Kit 355094 - Low Height Frame & Header DN65 x 2 Boiler Kit 355095 - Low Height Frame & Header DN80 x 3 Boiler Kit 355096 - Low Height Frame & Header DN100 x 4 Boiler Kit 355090 - Low Loss Header DN50 355091 - Low Loss Header DN65 355019 - Low Loss Header DN80 355092 - Low Loss Header DN100 355097 - Standard Height Flexible Gas Hose 355098 - Low Height Flexible Gas Hose

## NOTES

## NOTES





Customer Service:

**01482 443005**

Technical Help:

**01482 443005**

Manufactured to the highest UK standards,  
anything is possible with a Keston.

Keston Heating, PO Box 103, National Avenue,  
Kingston upon Hull, East Yorkshire, HU5 4JN

E: [enquiries@idealheating.com](mailto:enquiries@idealheating.com)

[keston.co.uk](http://keston.co.uk) |     

In accordance with our policy of constant improvement we reserve the right to alter the design and specification of products without prior notice.

**EXPERTS IN  
HEATING**

K\_220307\_Keston\_Product\_Guide\_March\_22