

# KESTON CONDENSING BOILER

## Users Instructions

**The Gas Safety (Installation And Use) Regulations: 1994** impose certain statutory obligations on gas users. Further information regarding these regulations can be obtained from your Gas Region. All gas appliances must be installed by competent persons by law in accordance with these regulations. Membership of CORGI is indication of such a competent person with regard to gas installation.

It is in your interests, and that of safety, to ensure that the appliance is installed correctly and that the law is complied with. Failure to do so could lead to prosecution.

### **Introduction**

These instructions should be carefully read to ensure safe and economical use of your boiler.

The Keston Condensing Boiler series are high efficiency central heating condensing boilers designed to provide central heating and indirect domestic hot water supply. They are designed for use with fully pumped systems only. These boilers are supplied for natural gas use but may be converted for use with LPG by installing the appropriate conversion kit. This conversion must be carried out by a competent person.

### **Servicing**

To ensure continual safe and efficient operation of the boiler it is recommended that the appliance be checked and serviced as necessary at regular intervals. Generally once per year will be sufficient. It is the law that any servicing must be carried out by a competent person.

### **Clearances**

If fixtures are to be positioned close to the boiler the following minimum clearances must be observed: Top : 254 mm, Bottom : 127 mm, Left : 1 mm, Right : 1 mm & Front : 305 mm. Extended clearance is required to the front to allow for access for servicing.

### **Cleaning**

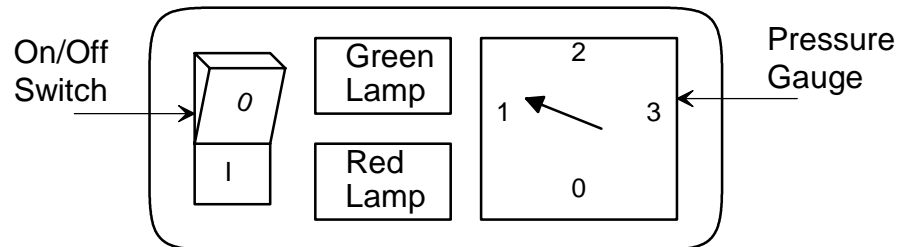
Normal casing cleaning only requires dusting with a dry cloth. To remove more stubborn marks wipe with a damp cloth and finish with a dry cloth.

### **Boiler Setup**

- 1) Check that the gas supply from the gas meter is turned ON
- 2) Check that the gas tap to the boiler is in the ON position (i.e. the screwdriver slot is aligned with the gas tap).
- 3) Switch on the electric supply to the boiler and controls and set the heating controls to call for heat.
- 4) Check the pressure gauge, to the right on the control panel on the front of the boiler. This should show around 1 to 2 bar pressure for pressurised systems.

**Warning:** If there is no pressure indicated and the system is of the pressurised type do not attempt to light the boiler. Send for your Installer or Service Engineer to re-pressurise the system.

## To Light The Boiler



**Fig 1: Boiler Control Panel**

Switch the On/Off switch, to the left of the control panel on the front of the boiler, to the ON position. The following sequence will occur:

- 1) In the On position the On/Off switch will be lit with an amber light. *If the switch does not illuminate check that the electricity supply to the heating system is on and that the controls are calling for the boiler to fire.*
- 2) At the same time the red (lockout) light will illuminate. *If neither the red (lockout) lamp nor green (run), the upper lamp adjacent to the flame symbol, illuminate then the boiler is up to temperature and will automatically start when the heating temperature drops sufficiently.*
- 3) After about 15 seconds the boiler will ignite and the green (run) lamp, the upper lamp adjacent to the flame symbol, will also be illuminated.

The boiler is now running correctly and will proceed to switch itself on and off as the heating reaches its operating temperature.

If the green (run) lamp, the upper lamp adjacent to the flame symbol, goes out and the red light remains illuminated for more than two minutes, due to a failure to ignite or an interruption to the gas supply, turn the boiler off, wait for 10 seconds and turn the boiler on again as described above in **To Light The Boiler**. If the boiler still fails to ignite after three successive attempts contact your Installer or Service Engineer.

**NB:** The Keston boiler is designed for simplicity and hence has no user adjustment.

## Gas Leak or Fault

If you suspect a gas leak turn off the appliance immediately and contact your local gas region without delay.

If you suspect a fault with the appliance it must not be used until the fault has been corrected by a competent person.

In the unlikely event of a breakdown consult your Installer or Service Engineer